



HAL
open science

CAMS Radiation Service for solar energy users - how suitable are typical cloud retrieval schemes?

Faiza Azam, Jorge Lezaca, Marion Schroedter-Homscheidt, Mireille Lefèvre,
Yves-Marie Saint-Drenan, Laurent Saboret

► To cite this version:

Faiza Azam, Jorge Lezaca, Marion Schroedter-Homscheidt, Mireille Lefèvre, Yves-Marie Saint-Drenan, et al.. CAMS Radiation Service for solar energy users - how suitable are typical cloud retrieval schemes?. EUMETSAT Meteorological satellite conference 2023, Sep 2023, Malmo, Sweden. hal-04210050

HAL Id: hal-04210050

<https://minesparis-psl.hal.science/hal-04210050v1>

Submitted on 15 Nov 2024

HAL is a multi-disciplinary open access archive for the deposit and dissemination of scientific research documents, whether they are published or not. The documents may come from teaching and research institutions in France or abroad, or from public or private research centers.

L'archive ouverte pluridisciplinaire **HAL**, est destinée au dépôt et à la diffusion de documents scientifiques de niveau recherche, publiés ou non, émanant des établissements d'enseignement et de recherche français ou étrangers, des laboratoires publics ou privés.

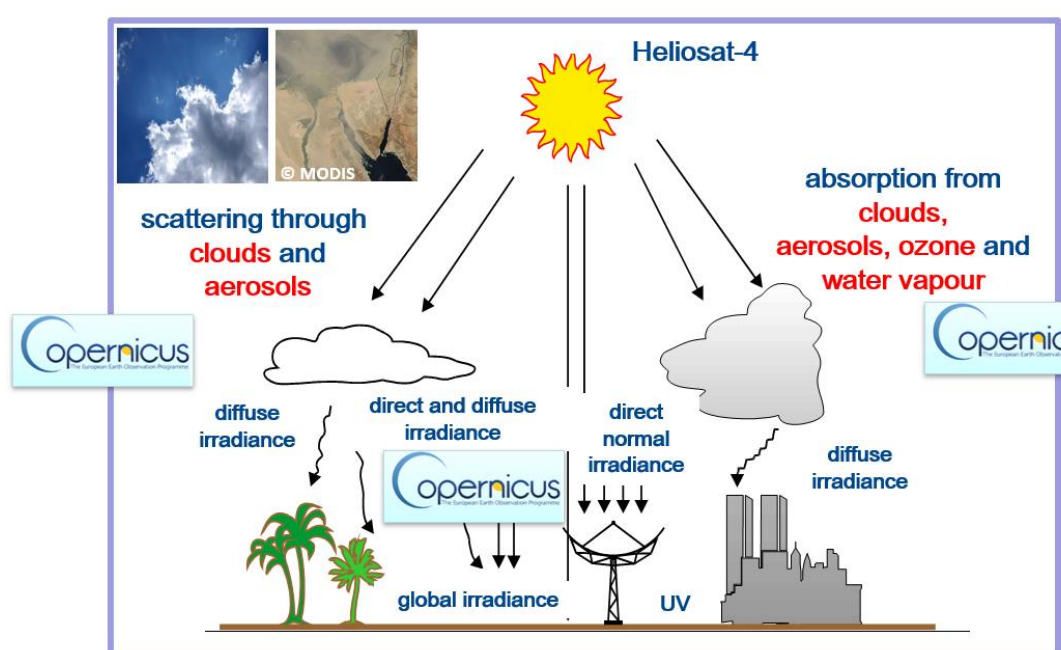
CAMS Radiation Service for solar energy users – how suitable are typical cloud retrieval schemes?

Faiza Azam¹, Jorge Lezaca¹, Marion Schroedter-Homscheidt¹, Mireille Lefevre², Laurent Saboret³, Yves-Marie Saint-Drenan²

¹German Aerospace Center (DLR), Institute of Networked Energy Systems, Oldenburg, Germany; ²MINES Paris, France; ³Vaisala, France faiza.azam@dlr.de

CAMS Solar Radiation Service

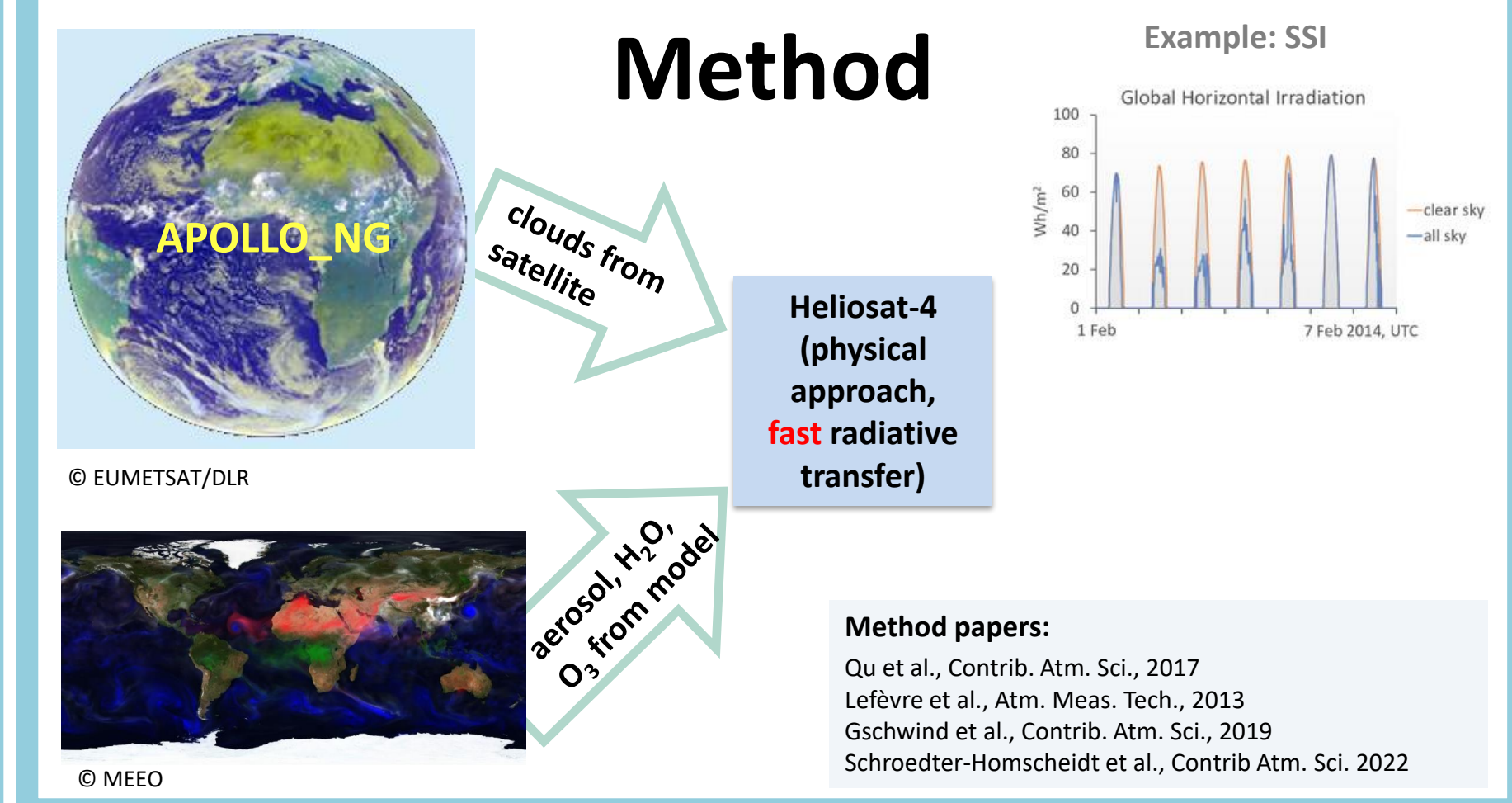
Copernicus Atmospheric Monitoring service (CAMS) offers solar radiation services (CRS) providing information on surface solar irradiance (SSI). The services meet the needs of European and national policy development and the requirements of partly commercial downstream services in the solar energy sector for e.g. planning, monitoring, efficiency improvements, and integration of renewable energies into the energy supply grids. CRS is provided by DLR with MINES Paris, the SoDa team at Vaisala and with FMI (Finnish Meteorological Service).



Data characteristics

- Feb. 2004 up to 2 days behind real time, online
- Global, Diffuse, Direct & Direct normal irradiation
- Temporal resolution: 1 min, 15 min, 1 hour, 1 day, 1 month
- Global coverage for clear sky parameters and all-sky radiation time series within satellite field of view
- Gridded data for 2005-2022 with 0.2° grid and 15 min resolution for Europe/Africa/Middle East
- Provision of all input data in the expert mode

Method



The method diagram shows the APOLLO-NG satellite and the Heliosat-4 physical approach for fast radiative transfer. It includes a reference to an example SSI plot and a list of method papers.

Method papers:
 Qu et al., Contrib. Atmos. Sci., 2017
 Lefevre et al., Atmos. Meas. Tech., 2013
 Gschwind et al., Contrib. Atmos. Sci., 2019
 Schroedter-Homscheidt et al., Contrib. Atmos. Sci., 2022

Cloud retrieval schemes : CAMS/APOLLO-NG vs CLAAS-3/PPP

Clouds are the main cause of variability and also the dominant source of errors in the all sky SSI retrieval. The focus of the presented study is the evaluation of the APOLLO-NG cloud properties, as used in the current CRS 4.5, through comparison with the CLAAS-3 (Cloud property dAtaset using SEVIRI - Edition 3) PPP (Cloud Physical Properties) database implemented in CMSAF (Satellite Application Facility for Climate Monitoring) services. As Heliosat-4 offers the possibility to use cloud properties from different sources, both products are used in the Heliosat-4 scheme for the SSI assessment.

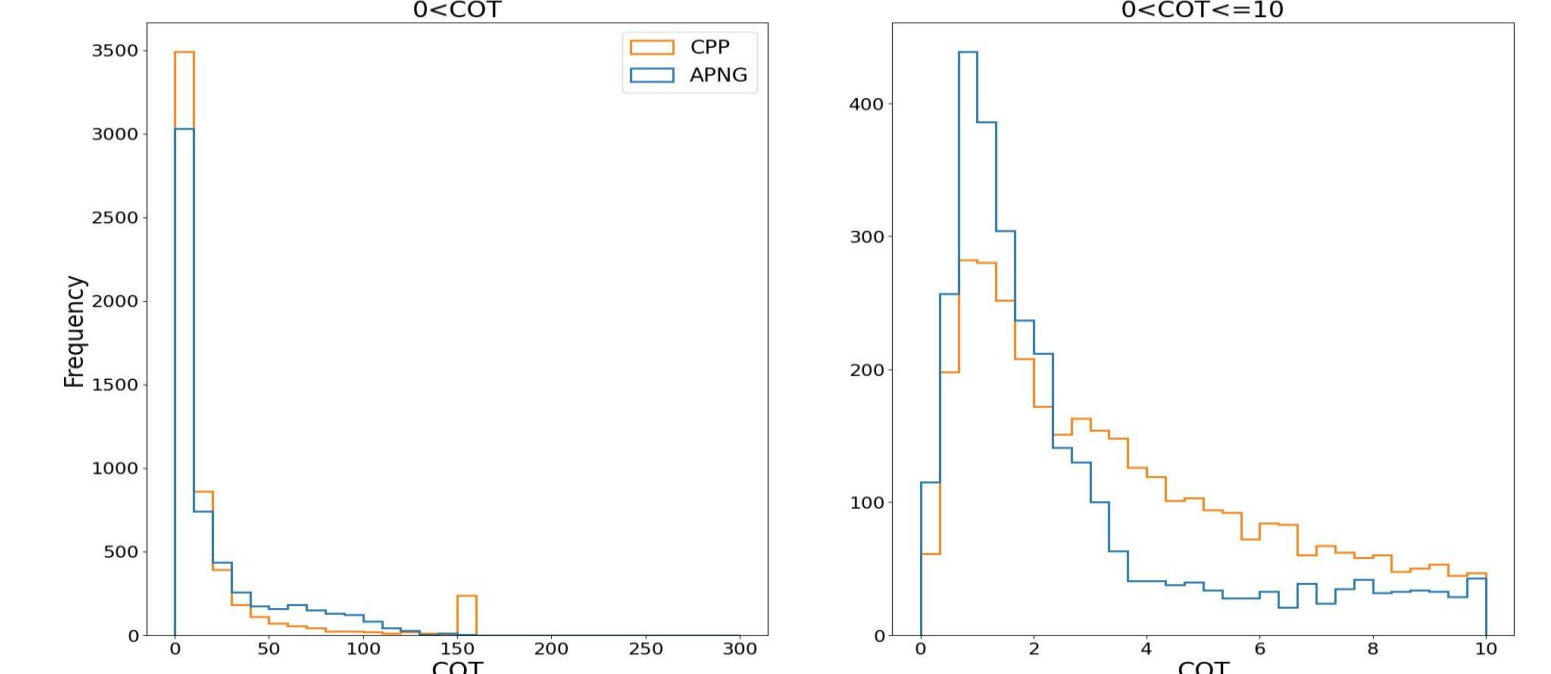
| | CAMS 4.5 | CLAAS-3 |
|--------------------------|---|--|
| Calibration | Time-dependent updated calibration coefficients from KNMI based on Meirink et al., 2013 & updates | Time-dependent updated calibration coefficients from KNMI based on Meirink et al. 2013 & updates |
| Cloud algorithm | APOLLO-NG REL1.1 | NWC/PPS version v2018 patch5 + CmsafPpsSeviri 0.5.0 and CPP v6 |
| Cloud masking | Probabilistic cloud mask, uses 5 threshold tests in VIS and IR (Klüser et al., 2015). | Probabilistic cloud mask, trained on collocated cloud observations from CALIOP onboard CALIPSO satellite (Karlsson et al., 2020). |
| Cloud threshold | 1% cloud probability | 50% cloud probability |
| COD/COT retrieval | Single channel approach, VIS 0.6 µm (Stephens et al., 1984) | Two channel approach, VIS/NIR 0.6/1.6 or 0.6/3.8 µm (Nakajima and King, 1990 & Roebeling et al., 2006) |
| Cloud type | low (5), medium (6) and high clouds (7), and thin clouds (8) | Not available |
| Cloud phase | water (1) and ice (2) | water (1) and ice (2) Extended cloud phase : water (3), supercooled (4), opaque_ice (6), cirrus (7), overlap (8), overshooting_convection (9) |

COT comparison

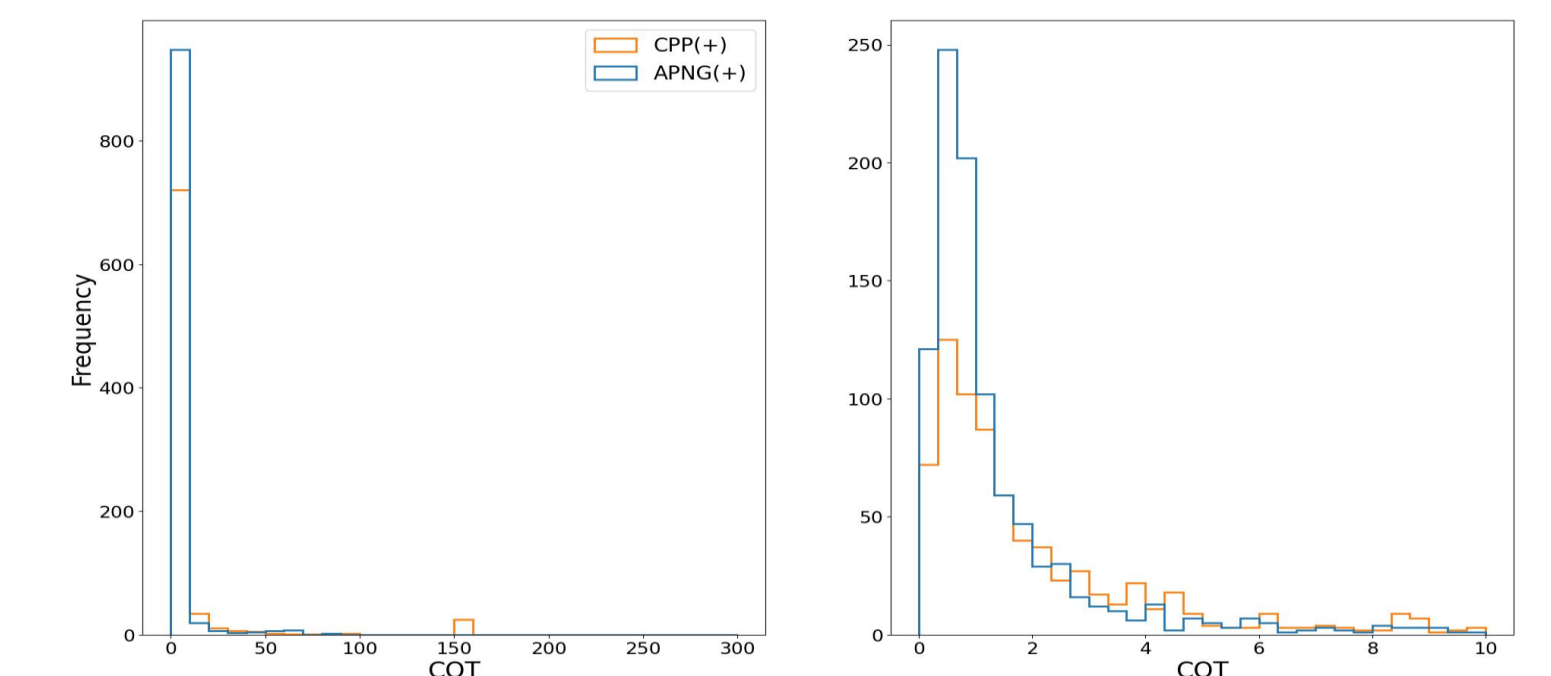
Frequency distribution of the COT values of APOLLO-NG and CPP

Example: BSRN location Carpentras, 2016

Histograms of COT, cloudy (in all methods)

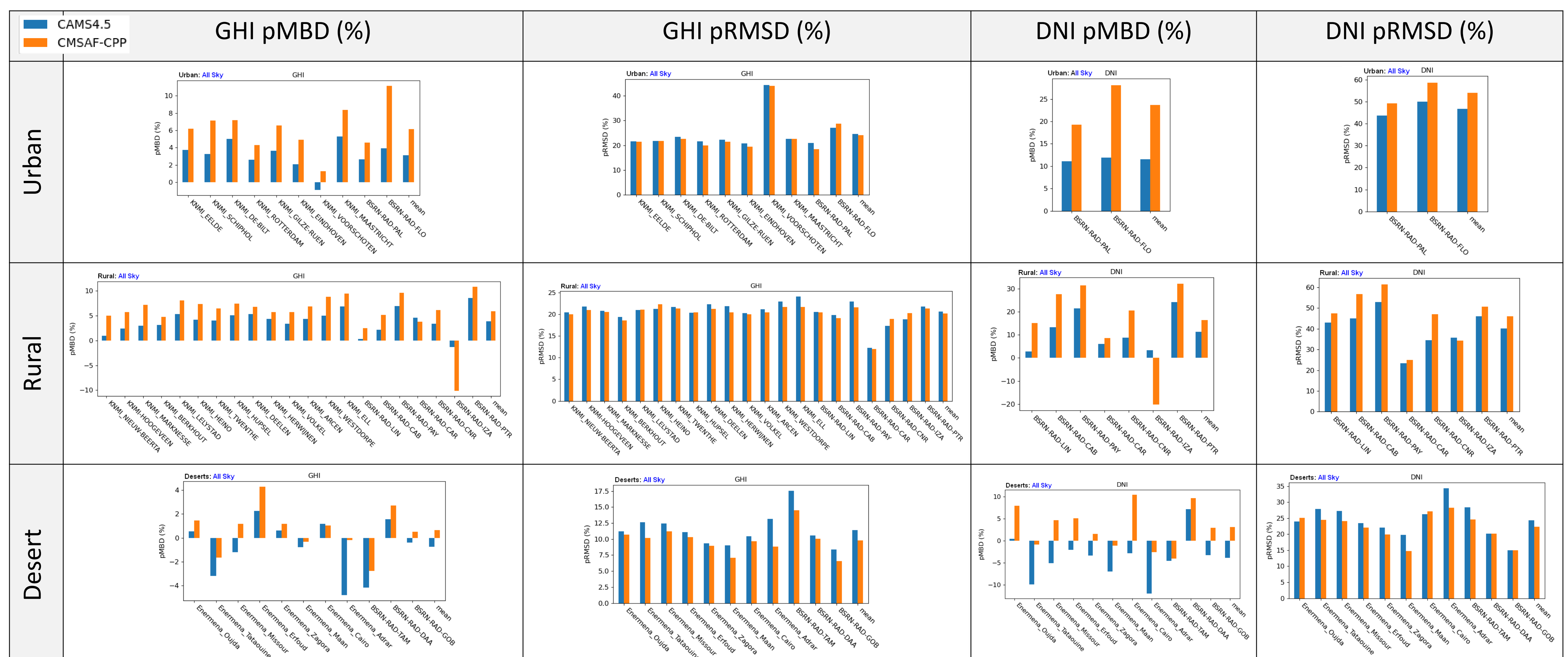


Histograms of COT (+ means one cloudy & other not cloudy)



Assessment of SSI obtained from CAMS4.5 APOLLO-NG and CLAAS-3 CPP vs ground observations

- Cloud parameters required for Heliosat-4 are COT and Cloud type. CLAAS-3 CPP Cloud phase is mapped to APOLLO-NG Cloud type by setting water and supercooled classes to low clouds; opaque_ice, overlap and overshooting_convection to high clouds; and cirrus to thin clouds
 - 2016, hourly estimates of all-sky GHI and DNI compared to BSRN, Ennermena and KNMI stations pMBD: CAMS 4.5 APOLLO-NG performs better compared to CLAAS-3 CPP in urban and rural regions. Inconclusive results in desert regions
 - pRMSD: In general CAMS4.5 values are slightly higher with the exception of DNI in rural and urban areas
- Study is ongoing with deeper analysis into impact of different cloudy conditions



References

- CAMS Radiation Service User's Guide at <http://atmosphere.copernicus.eu/documentation>
- CLAAS-3 cloud products and CPP v6 documentations at https://wui.cmsaf.eu/safira/action/viewDoiDetails?acronym=CLAAS_V003
- Gschwind et al., 2019: Improving the McClear model estimating the downwelling solar radiation at ground level in cloud-free conditions – McClear-v3, Contrib. Atmos. Sci./Meteorol. Z., 2019
- Karlsson, K.-G., et al., 2017: CLARA-A2: the second edition of the CM*SAF cloud and radiation data record from 34 years of global AVHRR data, Atmospheric Chemistry and Physics, 17, 5809-5828, doi:10.5194/acp-17-5809-2017
- Klüser et al., 2015: APOLLO-NG – a probabilistic interpretation of the APOLLO legacy for AVHRR heritage channels, Atmos. Meas. Tech., 8, 4155-4170
- Lefevre et al., 2013: McClear: a new model estimating downwelling solar radiation at ground level in clear-sky conditions, Atmos. Meas. Tech., 2013
- Meirink, J.F., et al., 2013: Inter-calibration of polar imager solar channels using SEVIRI, Atmos. Meas. Tech., 6, 2495-2508
- Nakajima, T., and M. D. King, 1990: Determination of the Optical Thickness and Effective Particle Radius of Clouds from Reflected Solar Radiation Measurements. Part 1: Theory, J. Atmos. Sci., 47, 1878-1893. Nakajima, T. Y., and T. Nakajima, 1995: Wide-Area Determination of Cloud Microphysical Properties from NOAA AVHRR Measurements for FIRE and ASTEX regions. J. Atmos. Sci., 52, 4043 – 4059.
- Roebeling, R.A., et al., 2006: Cloud property retrievals for climate monitoring: Implications of differences between Spinning Enhanced Visible and Infrared Imager (SEVIRI) on METEOSAT-8 and Advanced Very High Resolution Radiometer (AVHRR) on NOAA-17. – J. Geophys. Res. 111, D20210, DOI:10.1029/2005JD006990.
- Schroedter-Homscheidt, M., et al., 2022: Surface solar irradiance retrieval from MSG/SEVIRI based on APOLLO Next Generation and HELIOSAT-4 methods, Contrib. Atmos. Sci./ Meteorol. Z., 31, 6, 455-476. DOI: 10.1127/metz/2022/1132
- Stephens et al., 1984: A Shortwave Parameterization Revised to Improve Cloud Absorption, Journ. Atmos. Sci., Vol 41, no 4, 687-690
- Qu et al., 2017: Fast radiative transfer parameterisation for assessing the surface solar irradiance: The Heliosat-4 method, Contrib. Atmos. Sci./ Meteorol. Z., 2017

Acknowledgments

- This work is supported by the CAMS program, which is part of the EU Copernicus Program and implemented by ECMWF on behalf of the EU.
- We are thankful to: KNMI and DWD for providing the CLAAS-3 CPP cloud products; the ground stations operators Baseline Surface Radiation Network (BSRN) and Ennermena for providing the GHI and DNI measurements and Royal Netherlands Meteorological Institute (KNMI) for GHI data.