



**HAL**  
open science

## Development of Environmental Barrier Coatings on Ceramic Matrix Composites assisted by LASAT (Laser Shock Adhesion Test)

Guillaume Cottin, Vincent Guipont, Vincent Maurel, Emine Bakan, Robert Vassen, Dieter Koch

► **To cite this version:**

Guillaume Cottin, Vincent Guipont, Vincent Maurel, Emine Bakan, Robert Vassen, et al.. Development of Environmental Barrier Coatings on Ceramic Matrix Composites assisted by LASAT (Laser Shock Adhesion Test). HT-CMC, Sep 2019, Bordeaux, France. hal-02185840

**HAL Id: hal-02185840**

**<https://minesparis-psl.hal.science/hal-02185840>**

Submitted on 2 Dec 2020

**HAL** is a multi-disciplinary open access archive for the deposit and dissemination of scientific research documents, whether they are published or not. The documents may come from teaching and research institutions in France or abroad, or from public or private research centers.

L'archive ouverte pluridisciplinaire **HAL**, est destinée au dépôt et à la diffusion de documents scientifiques de niveau recherche, publiés ou non, émanant des établissements d'enseignement et de recherche français ou étrangers, des laboratoires publics ou privés.

# Development of EBC on CMC assisted by LASAT (Laser Shock Adhesion Test)

## COLLABORATIVE WORK

G. Cottin, **V. Guipont\***, V. Maurel

MINES ParisTech – PSL  
Centre des Matériaux  
France



E. Bakan, R. Vaßen

Forschungszentrum Jülich GmbH  
IEK-1  
Germany



D. Koch

German Aerospace Center (DLR)  
Institute of Structures and Design  
Germany

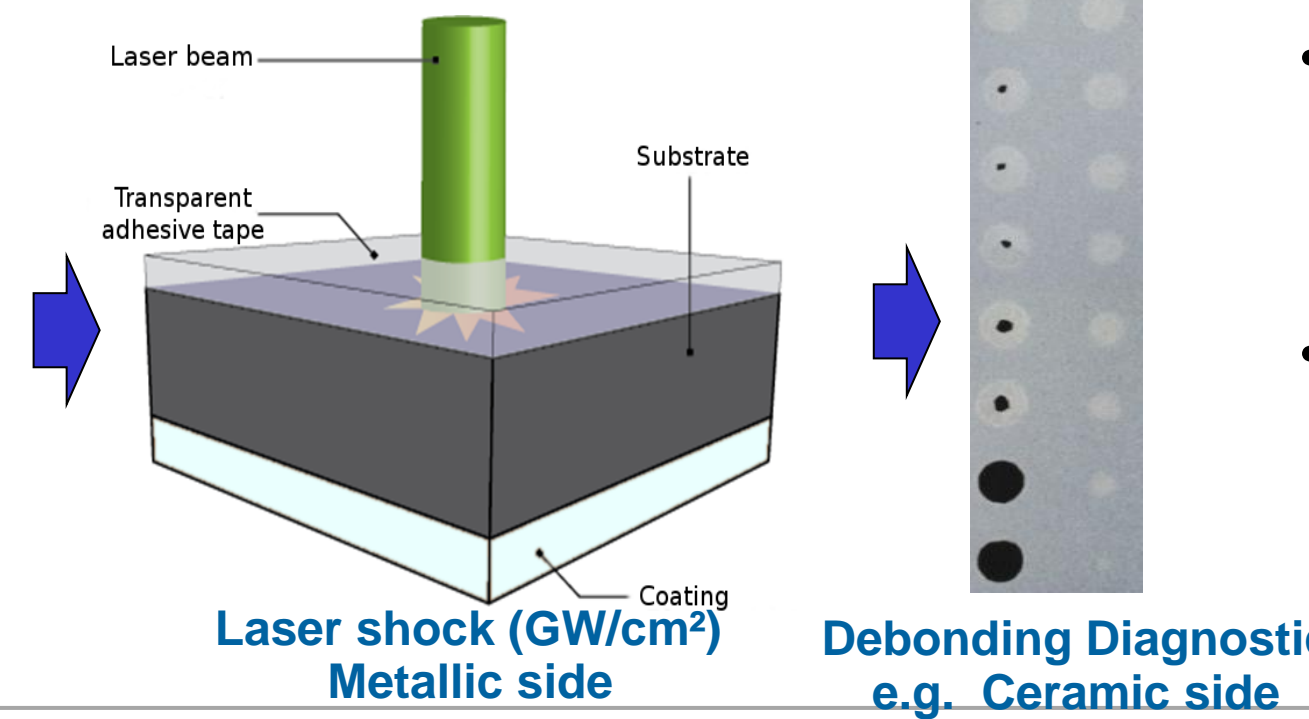


## CONTEXT: Laser-driven debonding → Interface strength of ceramic coatings

### LASAT: Laser Shock Adhesion Test



LASAT facility



#### • Saga –Thales Laser :

- maximum energy: 2J
- pulse duration: 5.2 ns
- wavelength: 532 nm

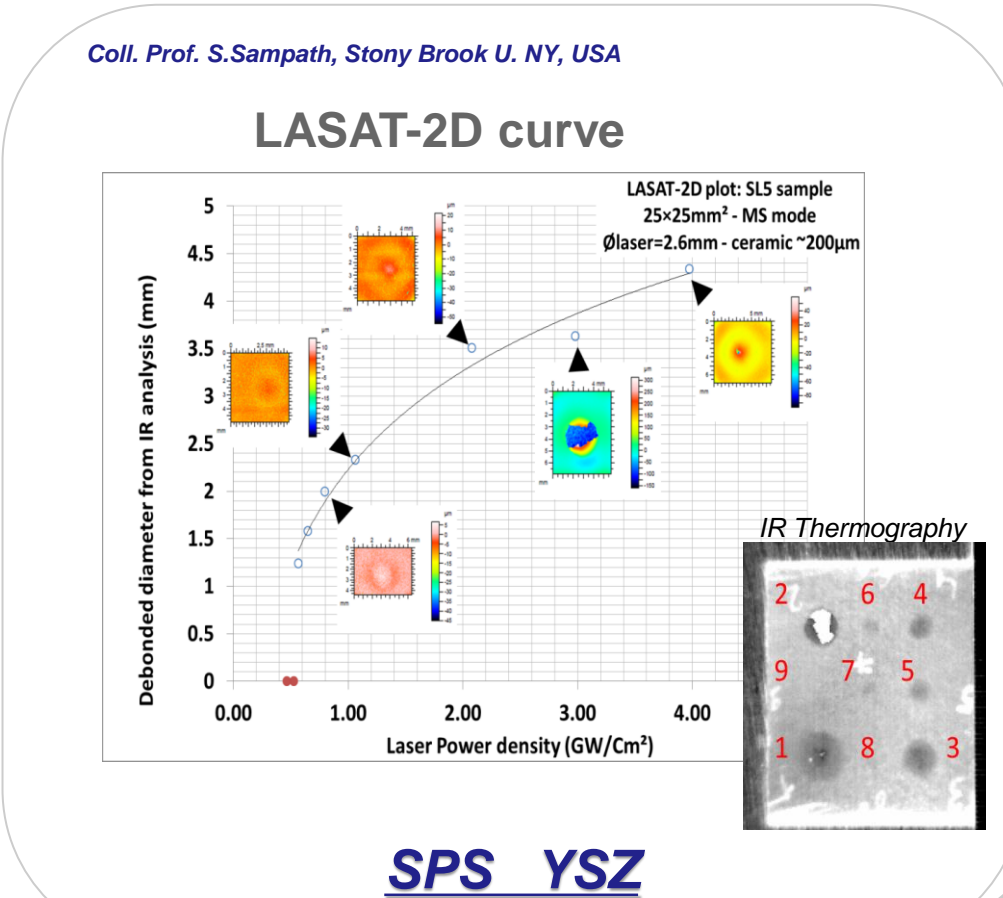
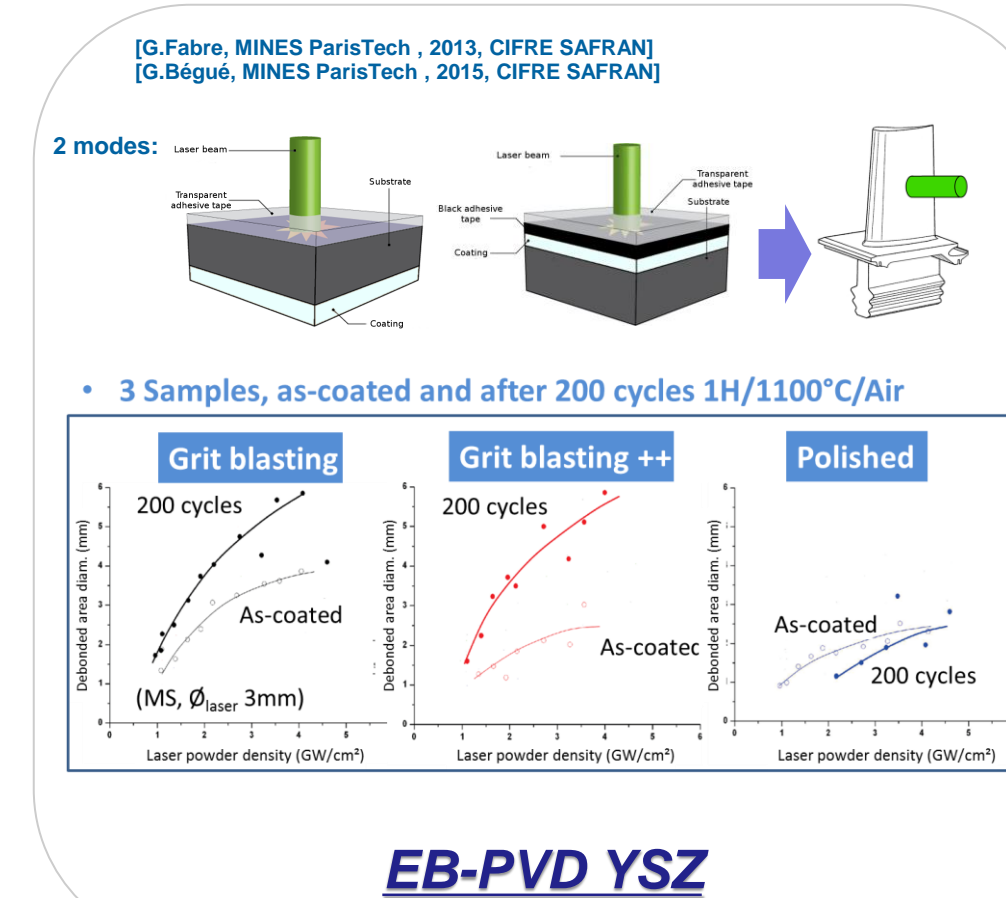
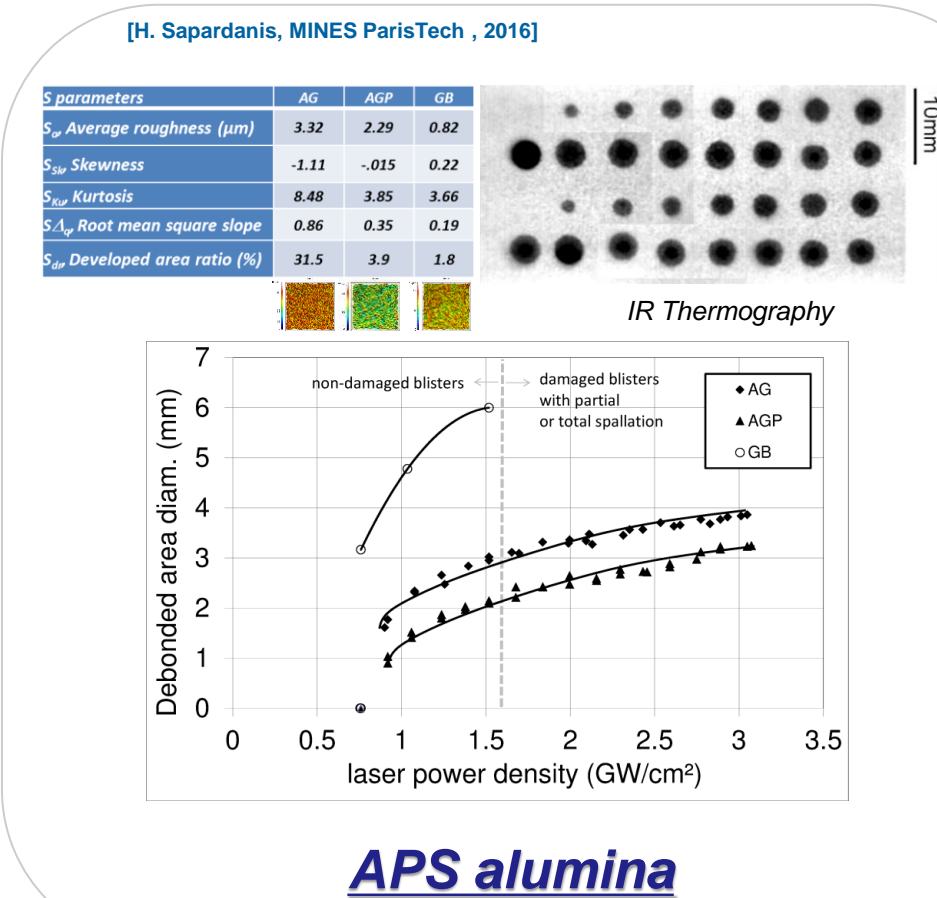
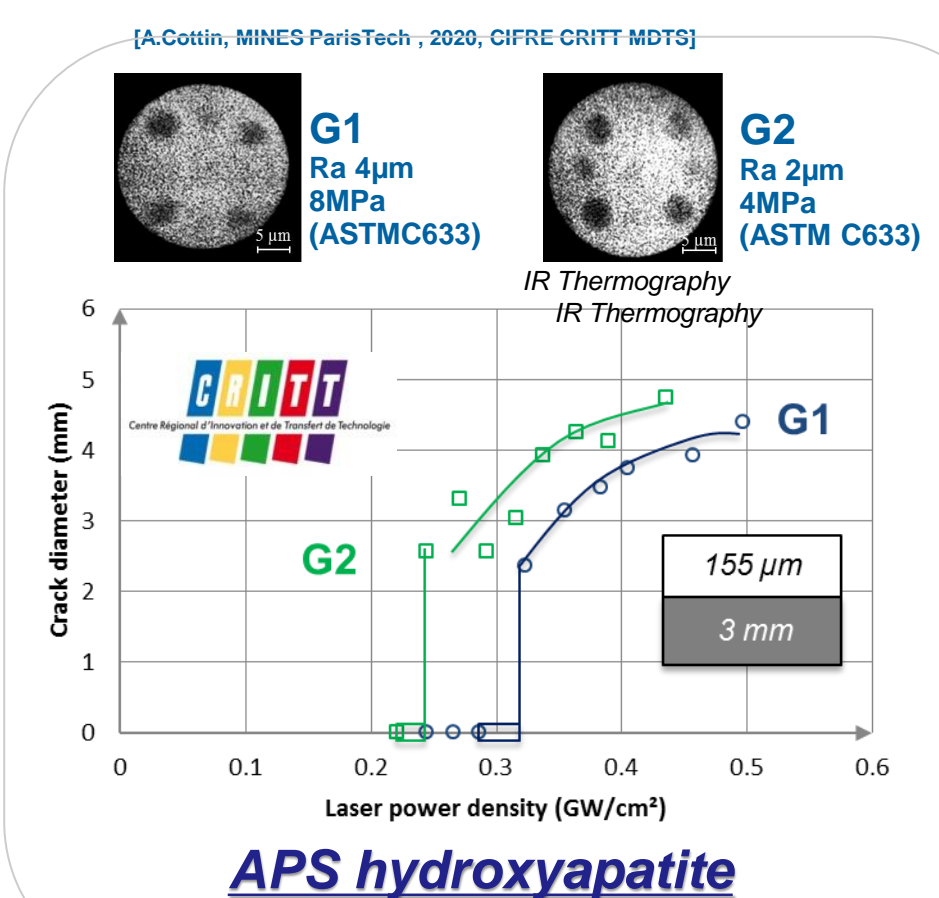
#### • Two settings parameters are:

- Irradiated area diameter,  $\varnothing_{laser}$
- Laser energy, J
- laser fluency (power density), 0,1 → 10GW/cm<sup>2</sup>

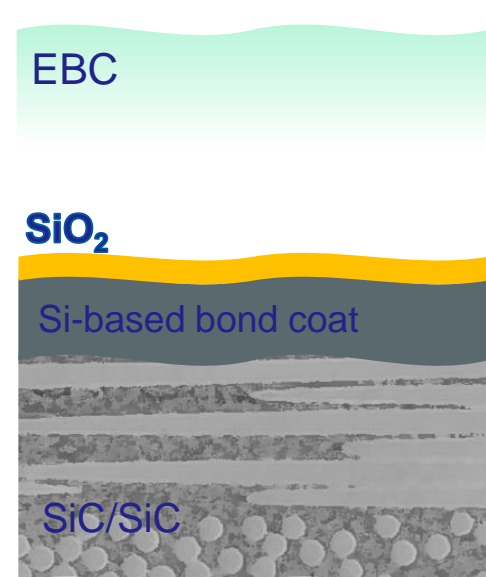
#### For coating system:

- Substrate thickness
- Coating thickness
- Failure threshold / LASAT 2D curves
- **No specific geometry**
- **No contact, Local assessment**

## BACKGROUND: LASAT applied to ceramic coatings on metallic substrates



## OBJECTIVES



Development of Plasma Spray Multilayered Environmental Barrier Coatings on CMCs

JÜLICH  
DLR

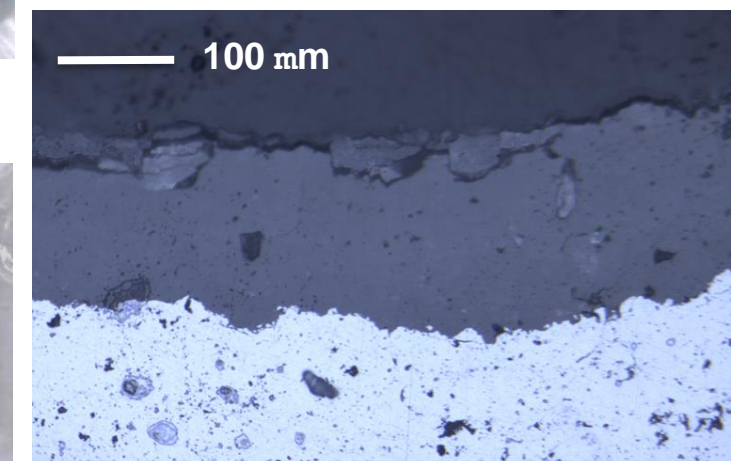
LASAT applied to EBC?  
→ Assessment of interface strength of CMC/EBC

- Dense layers
- Minimal CTE mismatch with CMC
- High water vapor resistance oxides e.g. Yb<sub>2</sub>Si<sub>2</sub>O<sub>7</sub> for SiC/SiC

## MATERIALS AND PROCESSES

### Spraying experiments

Sample	Dimensions	SiC/SiC	Si	Yb <sub>2</sub> Si <sub>2</sub> O <sub>7</sub>	Plasma
Sample 1	#1 25x25 mm <sup>2</sup>	3.4 mm	115 μm	109 μm	APS
	#2 25x25 mm <sup>2</sup>	3.4 mm	92 μm	123 μm	HV-APS



Sample #1 : Yb<sub>2</sub>Si<sub>2</sub>O<sub>7</sub> APS

Sample #2 : Yb<sub>2</sub>Si<sub>2</sub>O<sub>7</sub> HV-APS

### LASAT experiments

- $\varnothing_{laser}$ =3.1 mm / P= 2→5 Gw/cm<sup>2</sup>
- Confinement : water, adhesive tape
- with/without protective tape
- Metallic side (MS) or ceramic side (CS)

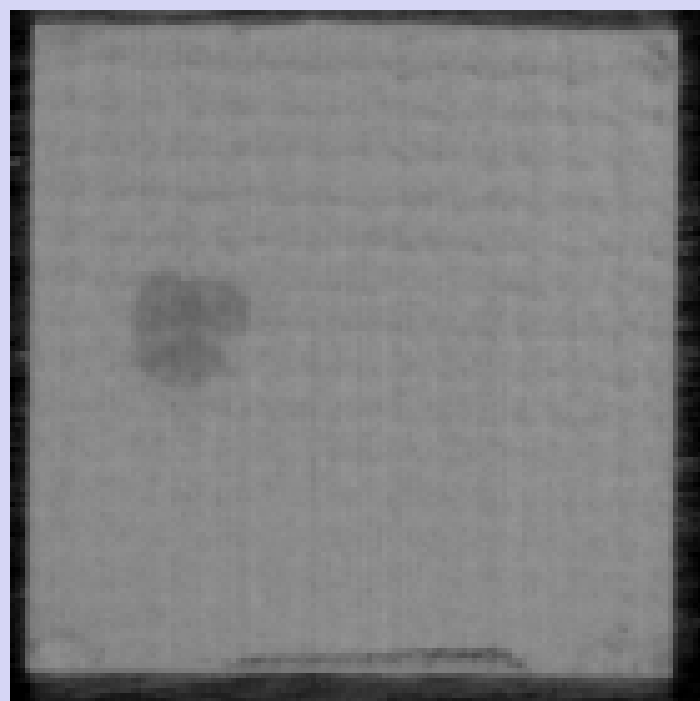
### Diagnostics:

- Optical top-surface image
- IR camera / substrate @50C
- Cross-section / OM

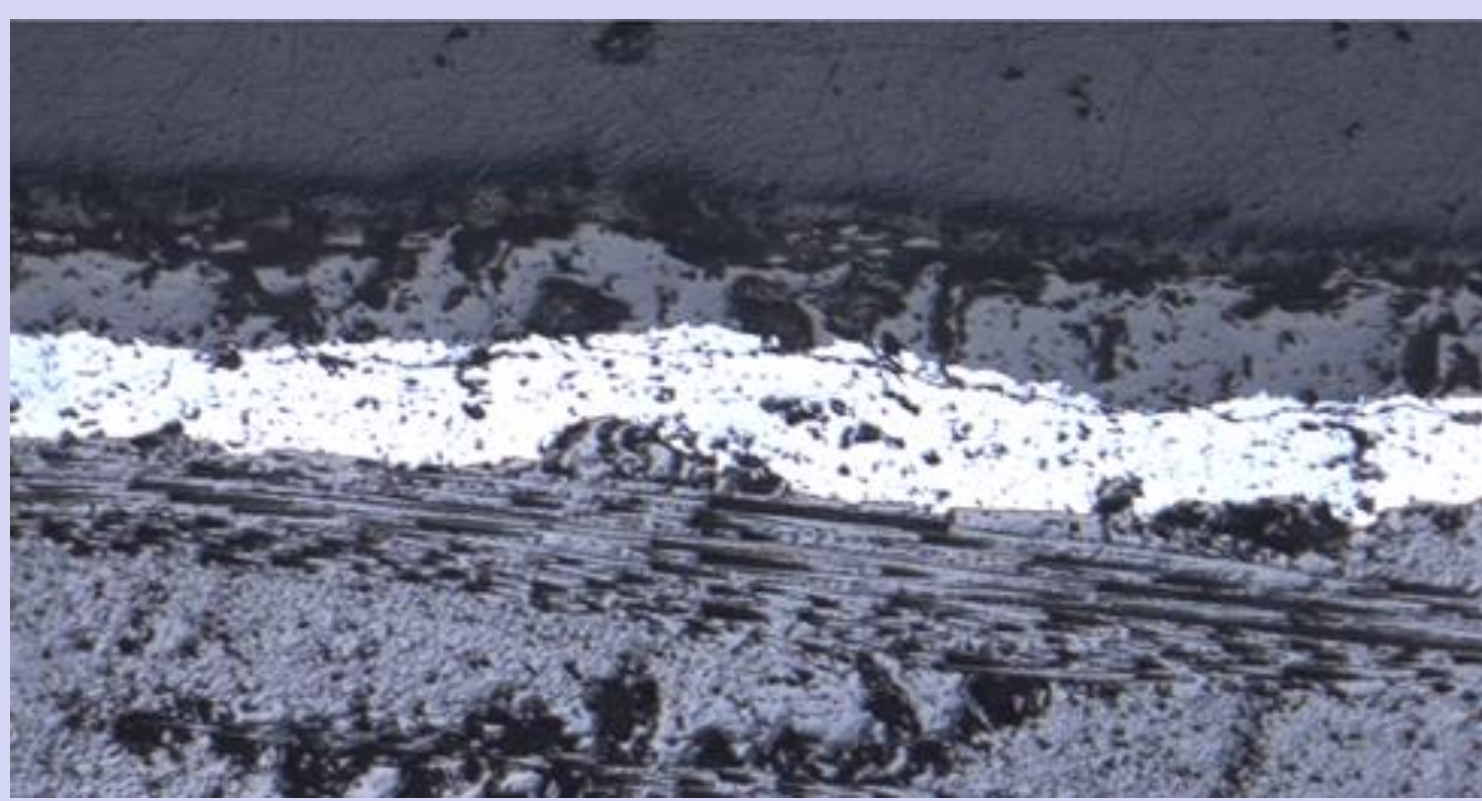
## HIGHLIGHTS

### 1. LASAT can be applied to CMC/EBC

- IR image ceramic top-surface
- 5 GW/cm<sup>2</sup>
- MS mode



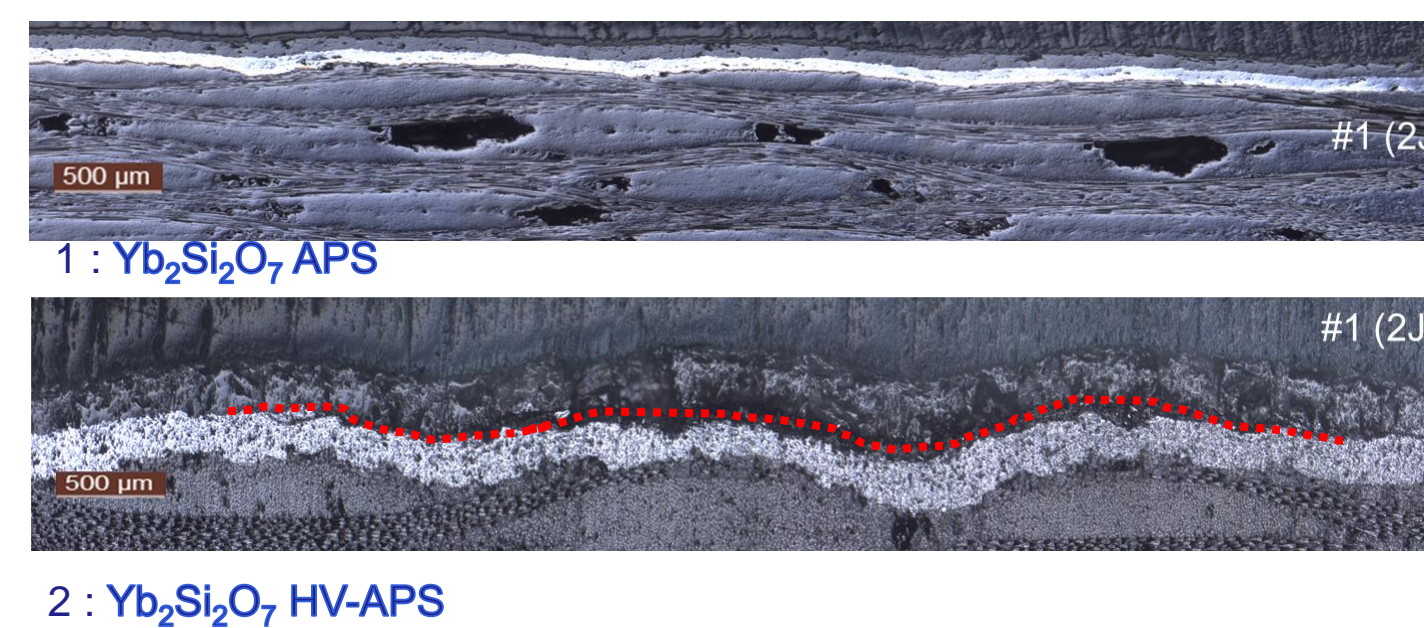
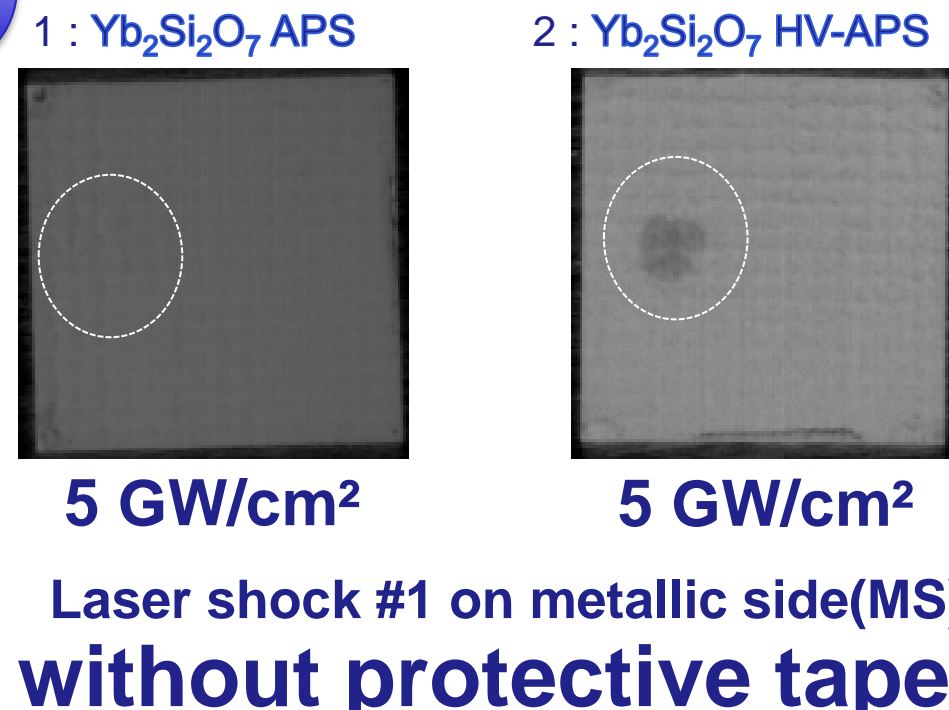
### 2. Laser-induced crack is located within the Si layer (HV-APS sample)



### 3. LASAT on ceramic side is applicable

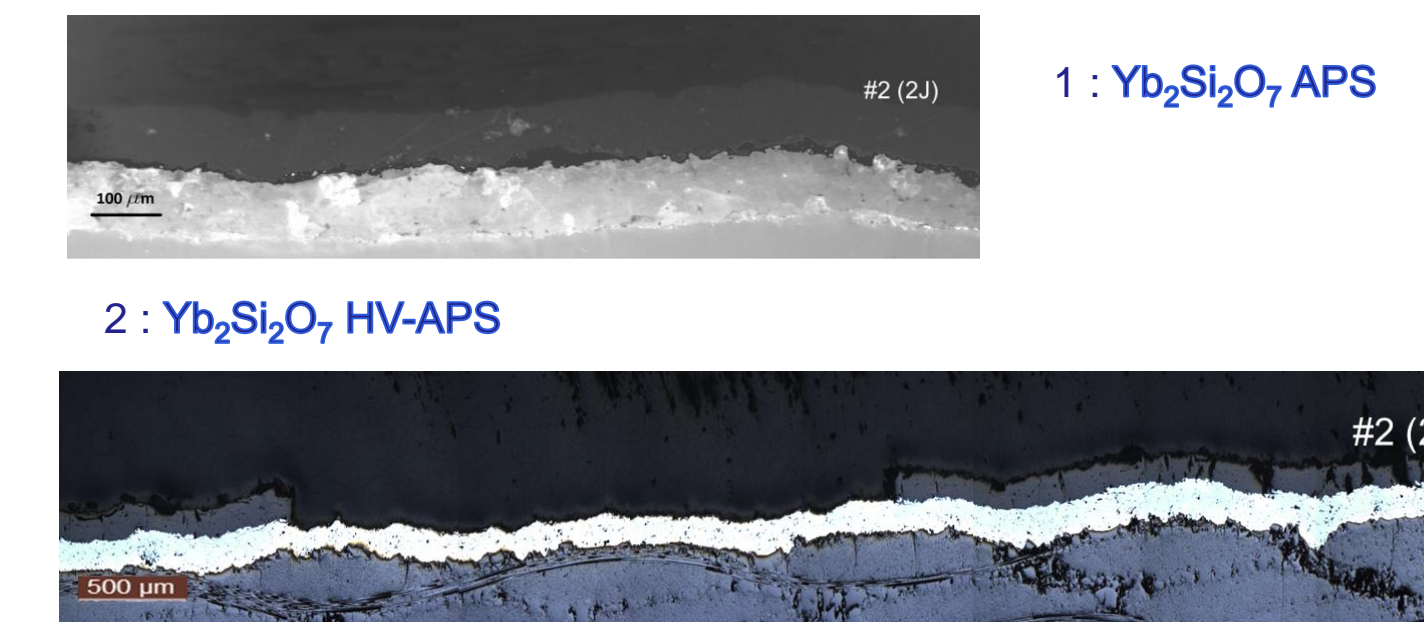
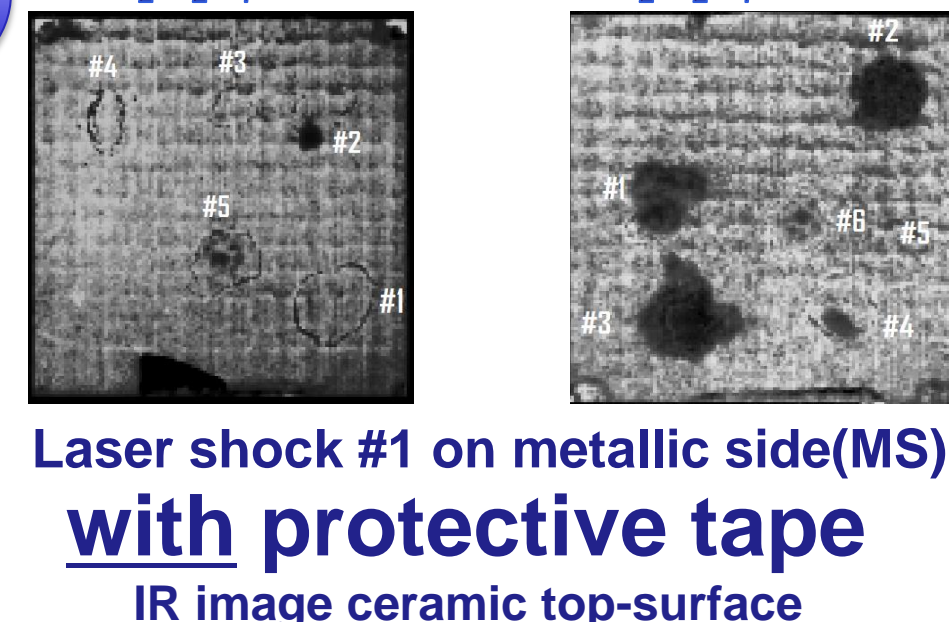
## MAIN RESULTS

### 1 IR image ceramic top-surface



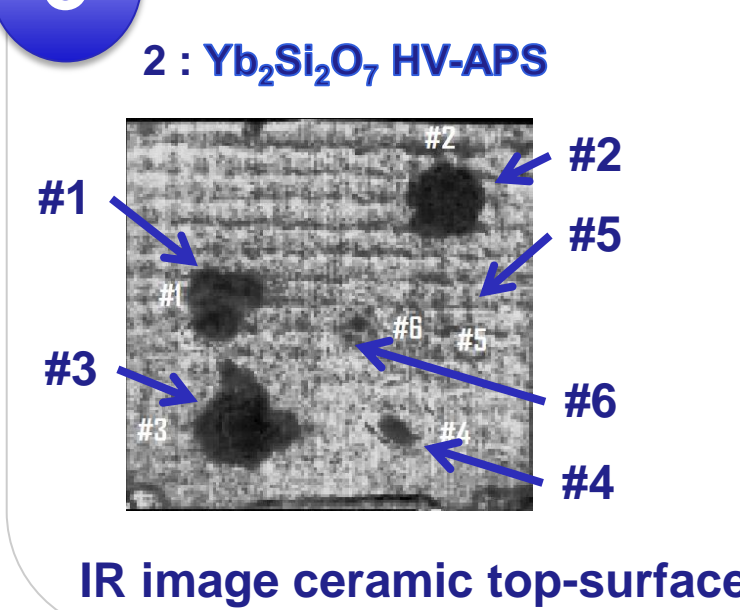
- Debonding occurred only for HV-APS sample
- IR imaging is applicable, not optical imaging
- Pores are evidenced within CMC substrate

### 2 IR image ceramic top-surface



- Small crack in case of 1 : Yb<sub>2</sub>Si<sub>2</sub>O<sub>7</sub> APS
- Spallation in case of 2 : Yb<sub>2</sub>Si<sub>2</sub>O<sub>7</sub> HV-APS
- IR imaging is applicable for small crack
- Protective layer and water increase laser-induced input pressure

### 3 IR image ceramic top-surface



	Side	GW/cm <sup>2</sup>	Damage	Laser shock conditions
#1	CMC	5,1	Crack 5 mm	Without protective tape + transparent tape
#2	CMC	4,8	spallation	With protective tape + water
#3	CMC	3,7	spallation	With protective tape + water
#4	CMC	2,5	Crack 1.2 mm	With protective tape + water
#5	CMC	1,9	Crack 0.8 mm	With protective tape + water
#6	EBC	4,9	Crack 0.5 mm	With protective tape + water

- Crack size is decreasing with laser energy
- Crack located Si/Si near Yb<sub>2</sub>Si<sub>2</sub>O<sub>7</sub> coating
- LASAT with CS mode is applicable

## CONTACT

Dr Vincent GUIPONT  
MINES ParisTech -PSL  
Centre des Matériaux, CNRS UMR 7633  
Evry, FRANCE  
Email: vincent.guipont@mines-paristech.fr

## CONCLUSIONS

- LASAT can be applied to CMC/EBC systems involving SiC/SiC -Si-Yb<sub>2</sub>Si<sub>2</sub>O<sub>7</sub>
- HV-APS 25x25 mm<sup>2</sup> sample exhibited a conventional behaviour upon LASAT → LAST 2D curves can be envisaged
- IR imaging can be advantageously envisaged for a non destructive assessment of the interfacial damage
- MS or CS modes can be envisaged, the use of a protective layer is preferred
- The weakest and lowest toughness interfacial zone seems to be located within the Si layer after deposition
- The presence of large pores within CMC may have attenuated the propagating shockwave in case of the APS sample

