



DTPF 2018

September, 18th 2018, Toulouse ■ ■

■ X-ray imaging of High Temperature furnace applied to glass melting

D. Boloré (SVI, UMR CNRS/Saint-Gobain), M. Gibilaro, L. Massot, P. Chamelot, E. Cid, O. Masbernat (LGC) & F. Pigeonneau (Mines-ParisTech PSL - CEMEF)

Motivations of the present work

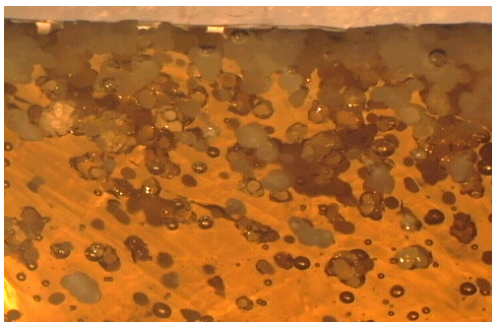
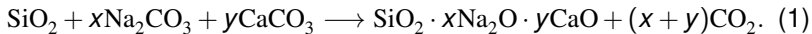


Figure 1: Melting of glass.



- ▶ 1 tonne of glass ➔ **200** kg of CO₂.

Motivations of the present work

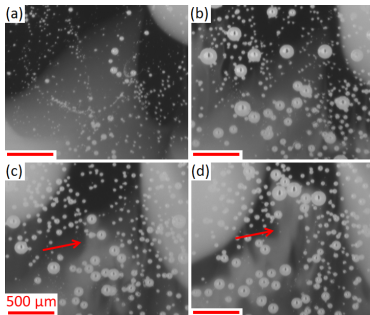


Figure 2: Motion of bubbles in a mixing of a dark and clear glass former liquids.

- ▶ What is the effect of bubble motion on the glass mixing?
- ▶ What is the bubble size distribution formed during the recycling glass melting?

Motivations of the present work

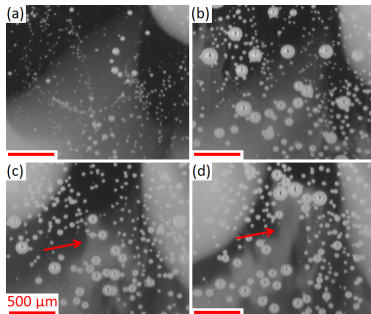


Figure 2: Motion of bubbles in a mixing of a dark and clear glass former liquids.

- ▶ What is the effect of bubble motion on the glass mixing?
- ▶ What is the bubble size distribution formed during the recycling glass melting?

Development of *in situ* non destructive monitoring set-up using a X-ray imaging

Agenda

1. Materials and methods

1.1 Materials

1.2 Experimental set-up

1.3 Image analysis

1.4 Optical flow

2. Results

2.1 Overall dynamics

2.2 Bubble size distributions

2.3 Velocity field with the optical flow technique

2.4 Bubble rising velocity

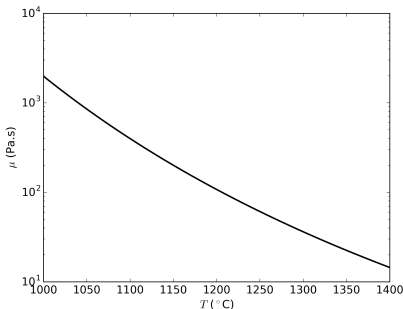
3. Conclusions and perspectives

1. Materials and methods

○ 1.1 Materials

SiO ₂	Na ₂ O	CaO	Al ₂ O ₃	K ₂ O	SO ₂	Fe ₂ O ₃	FeO
73.10	12.75	11.40	1.77	0.74	0.15	0.02	0.0054

Table 1: Chemical composition (wt %) of the glass used for experiments.



- ▶ $\mu = 398.19 \text{ Pa}\cdot\text{s}$ at $T = 1100^\circ\text{C}$.
- ▶ $\rho = 2383.72 \text{ kg/m}^3$.
- ▶ $\gamma = 0.315 \text{ N/m}$.

Figure 3: μ (Pa·s) vs. T (°C).

1. Materials and methods

○ 1.2 Experimental set-up

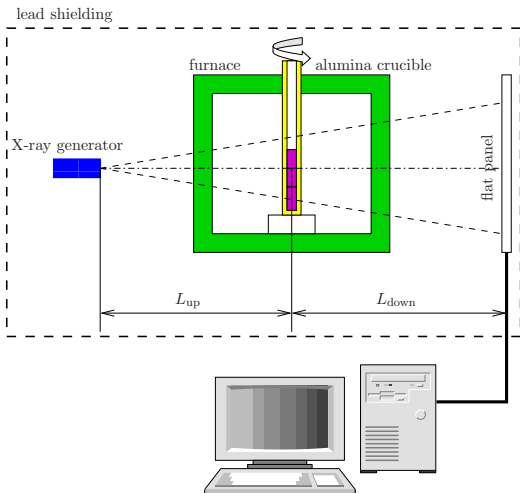


Figure 4: Experimental set-up with the X-ray source, the furnace with crucible and the flat panel (LGC).

1. Materials and methods

○ 1.2 Experimental set-up

- ▶ YXLON power generator (2500 W); radiation rate $2.2 \cdot 10^{10} \mu\text{Sv/h} \gg 80 \mu\text{Sv/h}$.
- ▶ Flat panel: $20 \times 20 \text{ cm}^2$ with $1024 \times 1024 \text{ px}^2$, space resolution of $80 \mu\text{m/px}$.
- ▶ Image acquisition: every 4 s with integration of signal over 130 ms (~ 30 images) and recording time of 50 ms.
- ▶ Circular crucible in alumina; $r_{\text{int.}} = 9 \text{ mm}$, $r_{\text{ext.}} = 10 \text{ mm}$.
- ▶ Addition of small SnO_2 particles to increase the contrast in the liquid needed for the optical flow technique.

1. Materials and methods

○ 1.3 Image analysis

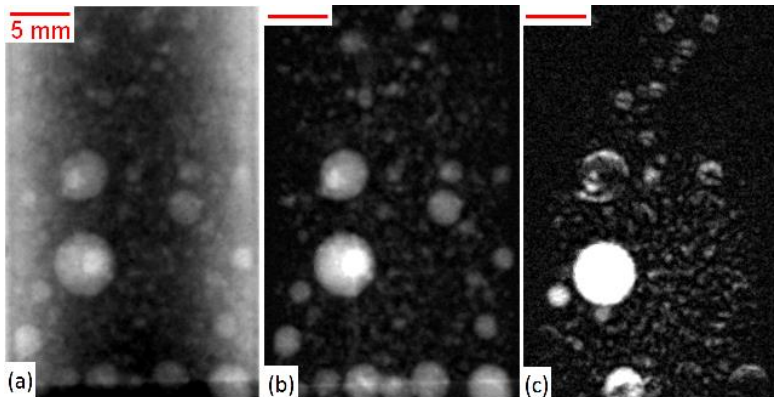


Figure 5: (a) original image, (b) enhanced contrast image by subtraction of the overall minimum, (c) Subtracting the sliding minimum on a sequence of 10 frames.

1. Materials and methods

○ 1.4 Optical flow

- ▶ Light intensity I is associated at each pixel.
- ▶ Assuming that this intensity is a continuous function which is conserved over the time, I verified the transport equation

$$\frac{\partial I}{\partial t} + \frac{\partial I}{\partial x} \frac{d\Phi_x}{dt} + \frac{\partial I}{\partial y} \frac{d\Phi_y}{dt} = 0, \quad (2)$$

$$U_x = \frac{d\Phi_x}{dt}, \quad U_y = \frac{d\Phi_y}{dt}. \quad (3)$$

- ▶ Velocity field of the projected images obtained by minimization of

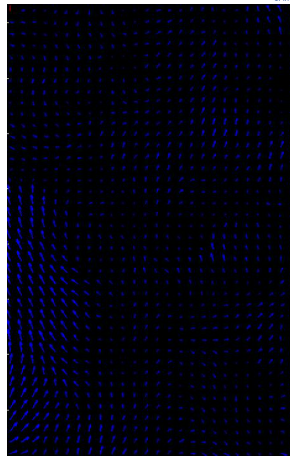
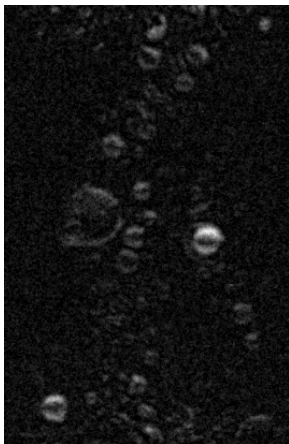
$$\epsilon_1 = \frac{\partial I}{\partial t} + \mathbf{U} \cdot \nabla I, \quad (4)$$

$$\epsilon_2^2 = (U_x - \bar{U}_x)^2 + (U_y - \bar{U}_y)^2, \quad (5)$$

- ▶ \bar{U}_x and \bar{U}_y : averages of velocity components in a neighborhood of the considered point.

1. Materials and methods

○ 1.4 Optical flow



Physical time of movies is 30 minutes.

2. Results

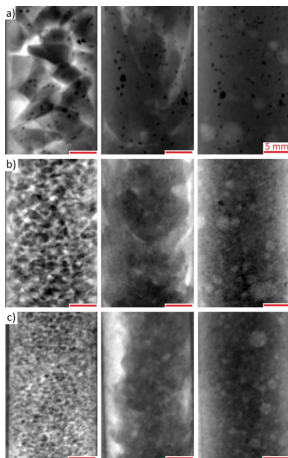
○ 2.1 Overall dynamics



Heating (10K/mn) of glass grain (medium size): Collapse, bubble generation and bubble rising (physical time = 2 h)

2. Results

○ 2.2 Bubble size distributions



large grain (6-8 mm)

medium grain (2-3 mm)

fine grain (0.3-0.8 mm)

Figure 6: Snapshots before melting (1st column), after glass transition (2nd column) and in liquid state (3rd column).

2. Results

○ 2.2 Bubble size distributions

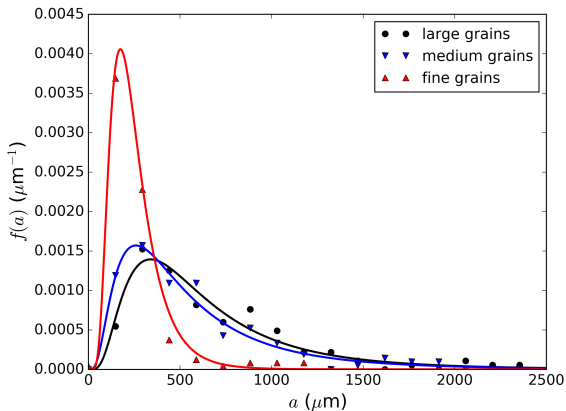
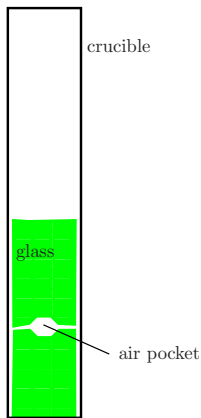


Figure 7: Bubble size distributions initially formed after melting for fine grain (0.3-0.8 mm), medium grain (2-3 mm) and large grain (6-8 mm).

2. Results

○ 2.3 Velocity field with the optical flow technique



- ▶ Tracking a unique bubble;
- ▶ Velocity field determined using the flow optic algorithm;
- ▶ Averaging over several bubble positions;
- ▶ Recalibration of the bubble position in the center of images.

Figure 8: Introduction of two glass pucks with an air pocket.

2. Results

○ 2.3 Velocity field with the optical flow technique

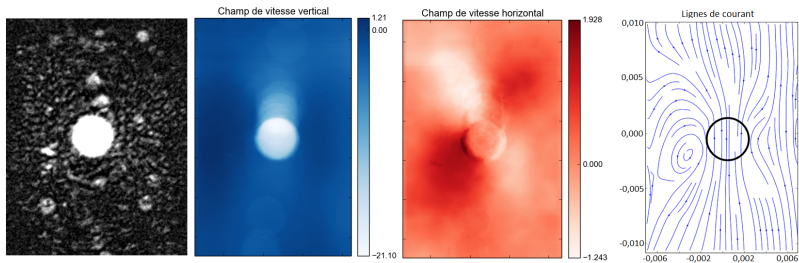


Figure 9: Image with recalibration around a bubble, $a = 2.25$ mm, and velocity field.

2. Results

○ 2.4 Bubble rising velocity

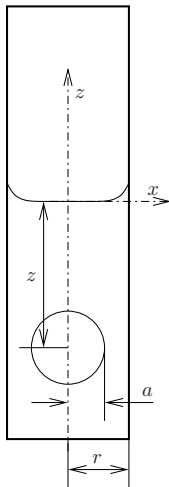


Figure 10: Bubble rising in a circular crucible.

2. Results

○ 2.4 Bubble rising velocity

- ▶ In Stokes regime with free shear interface, drag force is

$$F = 4\pi\mu aVK(\lambda), \quad \lambda = \frac{a}{r},$$

- ▶ According to Haberman and Sayre¹, K :

$$K = \frac{1 + 1.137855\lambda^5}{1 - 1.4033\lambda + 1.13787\lambda^5 - 0.72603\lambda^6}. \quad (6)$$

- ▶ Terminal velocity is then given by

$$\frac{V}{V_{H-R}} = \frac{1}{K(\lambda)}, \quad (8)$$

$$V_{H-R} = \frac{\rho g a^2}{3\mu}. \quad (9)$$

¹Haberman, W. L. & Sayre (1958), U.S. Navy Dept.

2. Results

○ 2.4 Bubble rising velocity

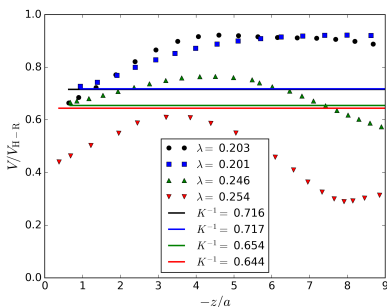


Figure 11: V/V_{H-R} vs. $-z/a$ obtained by bubble tracking.

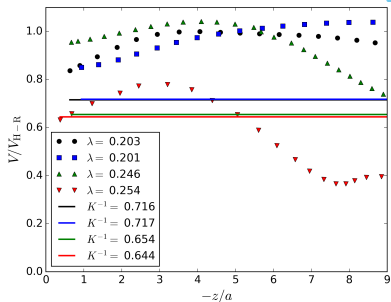


Figure 12: V/V_{H-R} vs. $-z/a$ obtained by optical flow technique.

3. Conclusions and perspectives

- ▶ X-ray imaging measurement applied to the dynamics of glass grain melting.
- ▶ The collapse and the bubble trapping and rising are nicely observed.
- ▶ Bubble distribution sizes vs. grain size have been determined and match very well with a log-normal distribution. **Yes, but why?**
- ▶ **A flow optic technique used to estimate the velocity field in the liquid needing next investigations.**
- ▶ **Use the crucible rotation to have 3d images (computed tomography).**
- ▶ **Study the mixing of the liquid due to the bubble rising.**

3. Conclusions and perspectives

- ▶ X-ray imaging measurement applied to the dynamics of glass grain melting.
- ▶ The collapse and the bubble trapping and rising are nicely observed.
- ▶ Bubble distribution sizes vs. grain size have been determined and match very well with a log-normal distribution. **Yes, but why?**
- ▶ **A flow optic technique used to estimate the velocity field in the liquid needing next investigations.**
- ▶ **Use the crucible rotation to have 3d images (computed tomography).**
- ▶ **Study the mixing of the liquid due to the bubble rising.**

Thank you very much for your attention!