



Dealing with Topological Information within a Fully Convolutional Neural Network

Etienne Decencière, Santiago Velasco-Forero, Fu Min, Juanjuan Chen, Hélène Burdin, Gervais Gauthier, Bruno Lay, Thomas Bornschloegl, Thérèse Baldeweck

► To cite this version:

Etienne Decencière, Santiago Velasco-Forero, Fu Min, Juanjuan Chen, Hélène Burdin, et al.. Dealing with Topological Information within a Fully Convolutional Neural Network. Advanced Concepts for Intelligent Vision Systems (ACIVS), Sep 2018, Poitiers, France. hal-01877624

HAL Id: hal-01877624

<https://minesparis-psl.hal.science/hal-01877624>

Submitted on 20 Sep 2018

HAL is a multi-disciplinary open access archive for the deposit and dissemination of scientific research documents, whether they are published or not. The documents may come from teaching and research institutions in France or abroad, or from public or private research centers.

L'archive ouverte pluridisciplinaire **HAL**, est destinée au dépôt et à la diffusion de documents scientifiques de niveau recherche, publiés ou non, émanant des établissements d'enseignement et de recherche français ou étrangers, des laboratoires publics ou privés.

Dealing with Topological Information within a Fully Convolutional Neural Network

Etienne Decencière¹, Santiago Velasco-Forero¹, Fu Min², Juanjuan Chen²
Hélène Burdin³, Gervais Gauthier³, Bruno Lay³
Thomas Bornschloegl⁴, and Thérèse Baldeweck⁴

¹ MINES ParisTech, PSL Research University, Centre for Mathematical Morphology, France

² L'Oréal Research and Innovation, 550 Jinyu Road, Pudong, Shanghai, China

³ ADCIS SA, 3 rue Martin Luther King, 14280 Saint-Contest, France

⁴ L'Oréal Research and Innovation, 1 avenue Eugène Schueller, 93601 Aulnay-sous-Bois, France

Abstract. A fully convolutional neural network has a receptive field of limited size and therefore cannot exploit global information, such as topological information. A solution is proposed in this paper to solve this problem, based on pre-processing with a geodesic operator. It is applied to the segmentation of histological images of pigmented reconstructed epidermis acquired via Whole Slide Imaging.

Keywords: Histological image segmentation, Convolutional neural network, geodesic operators, Mathematical morphology

1 Introduction

Image processing and analysis has been revolutionized by the rise of deep learning. For semantic segmentation, deep learning approaches use mainly convolutional neural networks (CNN) [3, 4]. In the biomedical field, U-Net [5] has become the state-of-the-art method for this task, but other solutions exist, such as SegNet [1]. These networks are fully convolutional. Their receptive fields are of limited size. Therefore, they cannot intrinsically process global information, such as topological information [6]. We recall that, unlike in networks containing fully connected layers, where the value of each unit depends on the entire input to the network, a unit in a convolutional networks only depends on a region of the input. This region in the input is the receptive field for that unit.

In the following, we present a practical real-world situation where the segmentation result depends on topological information. We show that a classical fully convolutional CNN does not give satisfactory results and propose a solution to this problem.

During the past years, the way of working in the histological field has changed due to the emergence of Whole Slide Imaging solutions that are now available and useful for pathologists but also for dermatologists and cosmetologists. These

automated scanners improve digital histology by allowing several hundred slides a day to be acquired through imaging process, and stored, used for second opinions or for automated analysis. This well-established technology provides large sets of image data that need to be automatically processed whatever the amount of generated data. Image analysis methods based on Deep Learning have proved to be extremely useful in this field [2, 8].

To circumvent this, we propose a method that allows neural networks based on convolutional layers to take into account non-local information. It is based on a geodesic operator, a popular tool from mathematical morphology. We apply it to the segmentation of whole slide images of pigmented reconstructed epidermis, as described hereafter.

2 Material

The images that were collected include pigmented reconstructed epidermis samples used to evaluate and identify the de-pigmenting or pro-pigmenting efficiency of cosmetic ingredients. They have been colored using a Fontana Masson staining, a silver stain that is used to highlight melanin and to also reveal skin layer morphology. Their sizes are diverse and can reach up to 20 million pixels. The ground truth (GT) has been obtained by an automatic method developed by the ADCIS company, whose results were manually edited and modified by L’Oréal experts, when needed. On those images, the goal of the segmentation is to identify two regions corresponding to two specific skin layers: the *stratum corneum* (SC) and the living epidermis.

The boundary between the SC and the background is usually rather difficult to determine, mainly because it can be composed of different layers separated by gaps due to the desquamation process that happens in the SC. Such layers are only considered as part of the SC if they constitute an unbroken boundary between the background and the sample. This feature is highly non local, and as such a convolutional neural network cannot enforce it.

The resulting database contains 120 color images, coming from 46 different slides. The original images are of variable size, and can contain more than 20 million pixels. The test database has been built with approximately 20% of the images. The remaining images were used for learning and validation. We took care to transfer all the images from a given slide into the same database.

Given the layered structure of the images, segmenting them into four regions is equivalent to finding three frontiers (see Fig. 1). The top one, between background and SC, has a variable appearance. In some images it corresponds to a contrasted contour; in other to a soft irregular contour. More importantly, its exact position depends on non-local information. Indeed, when a layer of the SC is separated from the rest of the tissue, it will belong to the SC region only if it is connected to the rest of the SC, or if it constitutes an unbroken frontier, going from the left side of the image to the right. Therefore it is not possible to make that decision based uniquely on local information. This kind of situation is illustrated by Fig. 1.

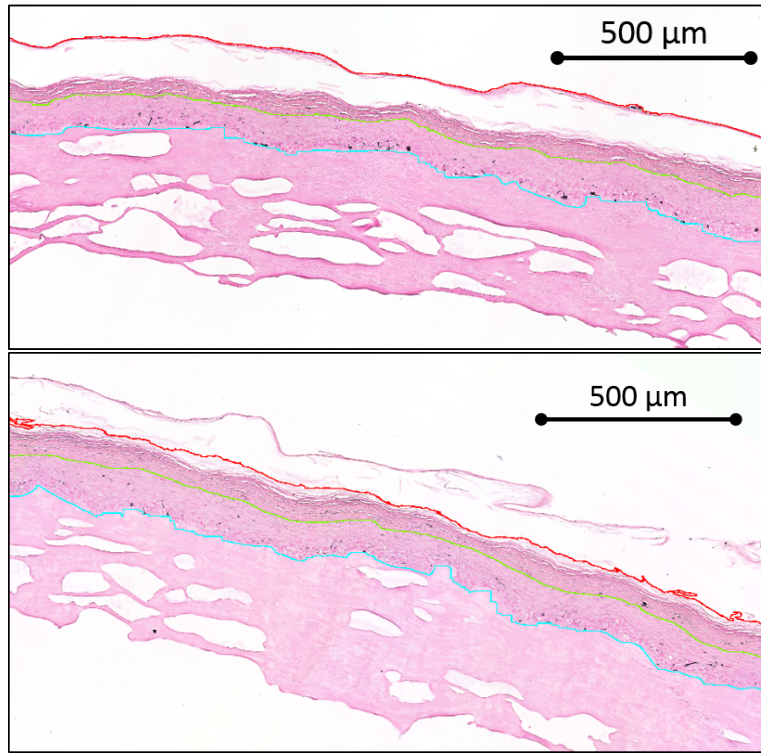


Fig. 1. Examples of original images with overlaid contours of the reference segmentation (best viewed in colour). Red/top contour: frontier between background and SC. Note that its position can be completely shifted if the detached layer is unbroken (top) or broken (bottom). Green/middle contour: frontier between SC and living epidermis. Cyan/bottom contour: frontier between living epidermis and collagen scaffold (here considered as background).

The second frontier separates SC from living epidermis. On our images, the distinction between those regions raises from different textures. The third frontier corresponds to the limit between living epidermis and collagen scaffold. Note that the fourth region to be segmented is made up of two compartments: the collagen scaffold that supports the reconstructed skin, and background. The collagen scaffold contains some large “holes” that can locally look as the “holes” within the SC.

The ground truth was generated using an automatic method developed by the ADCIS company, whose results were manually edited and modified by L’Oréal experts, when needed. Given that the top and bottom regions of the ground truth contained both a large white region, which could not be locally differentiated, we decided to only consider three labels: label 1 corresponds to the background

(both at the top and the bottom of the images) and collagen scaffold; label 2 to the SC; label 3 to the living epidermis.

3 Methods

It was decided to use convolutional neural networks to tackle this problem. During the learning phase, we worked with crops of a given size. After running some tests, the final size of the crops was 512×512 .

The ground truth segmentations, as they contained three labels, were classically represented as an image with three binary channels. Given that background white regions covered the majority of the images, for training we only used the crops that contained at least label 2 or label 3. This procedure is illustrated in Fig. 2. The resulting set of crops contains 1458 elements. 80% are randomly picked for learning; the other 20% are used for validation.

Concerning the loss functions, based on our experience with segmentation using convolutional neural networks, we chose the following loss function between two same length vectors X and Y , containing values included between 0 and 1:

$$J_2 = 1 - \frac{XY + \epsilon}{X^2 + Y^2 - XY + \epsilon}$$

where ϵ is a small constant, used for numerical reasons. This loss is based on the Jaccard index, also called “intersection over union” similarity measure, often used to evaluate the quality of a segmentation.

3.1 Neural network architecture and first results

After testing several network architectures, the one that gave the best results was U-Net [5] (using a sigmoid in the last activation layer, and using zero-padding in the convolutional layers). Full details are given in section 3.3. The validation loss of the resulting model was 0.085.

The networks output contains 3 channels. Each one can be interpreted as the probability of a given pixel of belonging to each region. In order to obtain a segmentation, we naturally gave to each pixel the label corresponding to the channel with the highest probability.

A qualitative analysis of the first results showed that the resulting frontiers between SC and living epidermis, on the one hand, and between living epidermis and collagen scaffold, on the other hand, were very satisfactory. However, the frontier between background and SC, in some cases, contained errors. In Fig. 2 (middle) we see that this frontier is incorrectly detected and that the gap between the detached SC layer, on the right, is incorrectly considered as belonging to the SC. These errors span from the fact, as we previously said, that the definition of this frontier is based on non local information.

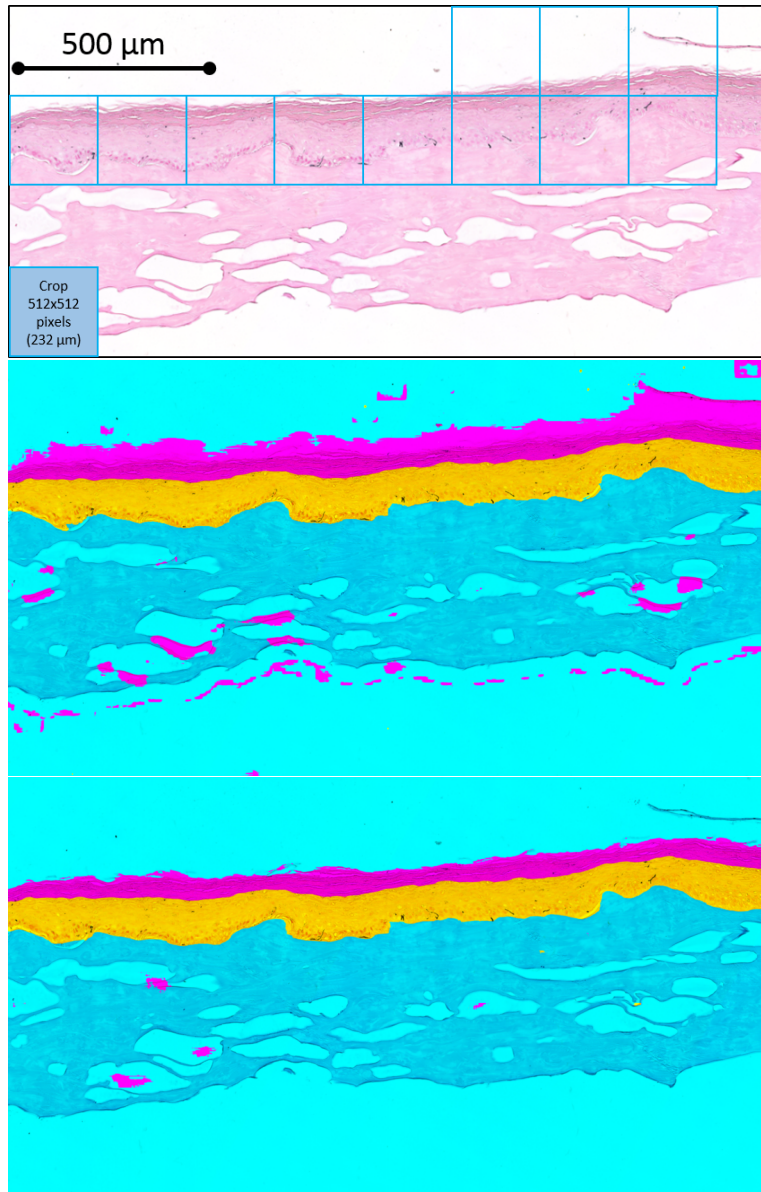


Fig. 2. Top: original image, showing the selected crops. Middle: results without using global information. Bottom: result using global information, thanks to the presented method. These segmentation results have not been postprocessed. They are overlayed on the original data using the following colour code: SC (magenta), living epidermis (orange) and other regions (cyan).

3.2 Taking into account non local information in a convolutional neural network

A new method is proposed here to cope with non local information within convolutional neural networks. It is based on a geodesic reconstruction of the input image from the top and bottom of the image, channel-wise.

We recall that the geodesic reconstruction [7] of a grey level image I from an image J_0 (often called marker) is obtained by iterating the following operation until idempotence:

$$J_{n+1} = \delta(J_n) \bigwedge I$$

where δ is a morphological dilation, here with the cross structuring element, corresponding to the 4-connectivity. Our marker image J_0 is equal to I on the first and last rows of the image domain, and to zero elsewhere. The process will “fill” the holes within the tissue, and preserve the intensity of the pixels that belong to the connected components of the background that touch the top and bottom of the image. This geodesic operation thus allows to bring topological information, which is essentially global, to a local scope.

In order to recover some of the bright details of the tissue sample, the result of this reconstruction is combined with the initial image by computing their mean. If we call J the result of the above reconstruction, the output image is simply:

$$F = (J + I)/2.$$

This operator is illustrated in Fig. 3. All images follow the same pre-processing (before computing the crops). Learning is done as before, with the same parameters.

The new CNN suppresses the segmentation errors due to the lack of global information on the background / SC boundary. Fig. 2 clearly shows this improvement.

The validation loss of the model is 0.028, to be compared with the previous value of 0.085.

3.3 Hyper-parameters optimization and data augmentation

We tuned the hyper-parameters of our system through manual grid search using the validation dataset. The parameters of the final model are: Optimizer: adadelta [9], with default parameters (learning rate: 1; rho: 0.95; epsilon: 10-8; decay: 0); epochs: 200; patience: 20, batch size: 4. The initial number of convolutional filters of the U-Net network is 16 (instead of 64 in the original paper), resulting in a network with 1,962,659 parameters.

We also tested several standard data augmentation methods, but they did not bring any improvement. We believe that this result means that our database constitutes a representative sampling of our image domain.

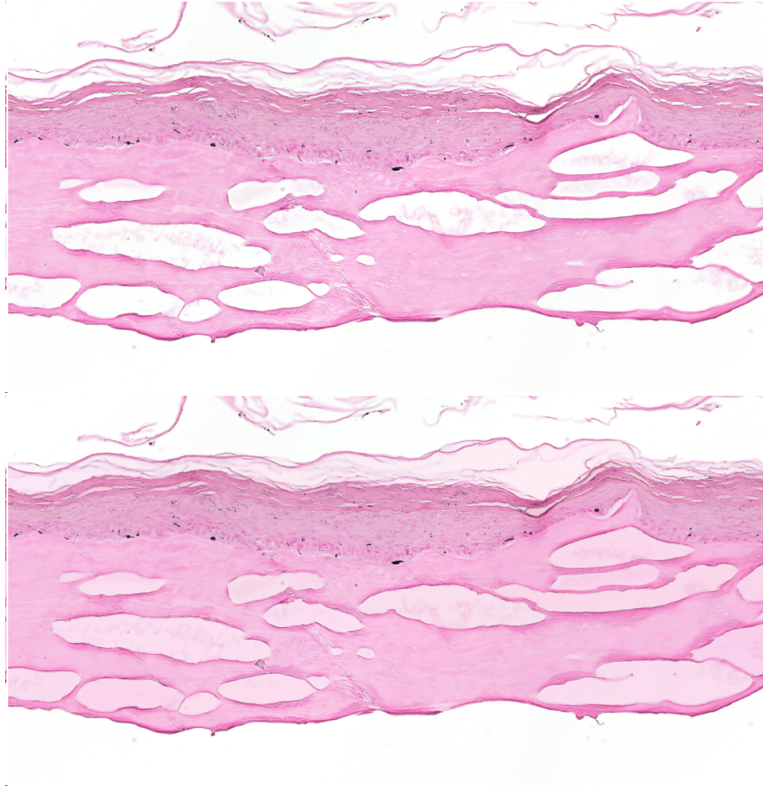


Fig. 3. Top: original image. Bottom: image after pre-processing based on the geodesic reconstruction. Differences are mainly visible on the holes within the tissue sample.

3.4 Post-processing

The current results are already satisfactory. There are however a few defects in the resulting segmentation (as can be seen in Fig. 2), most of which can be corrected with the following post-processing method:

1. For the SC and the living epidermis, keep only the largest connected component; for the background, keep the connected components that touch the top and the bottom of the image.
2. Pixels without label are given the label of the closest labelled pixel.

4 Results

It is interesting to note that once a convolutional neural network has been trained (with crops of constant size, as previously stated) it can be applied to images of almost arbitrary sizes. There are only two limitations: the system memory has to

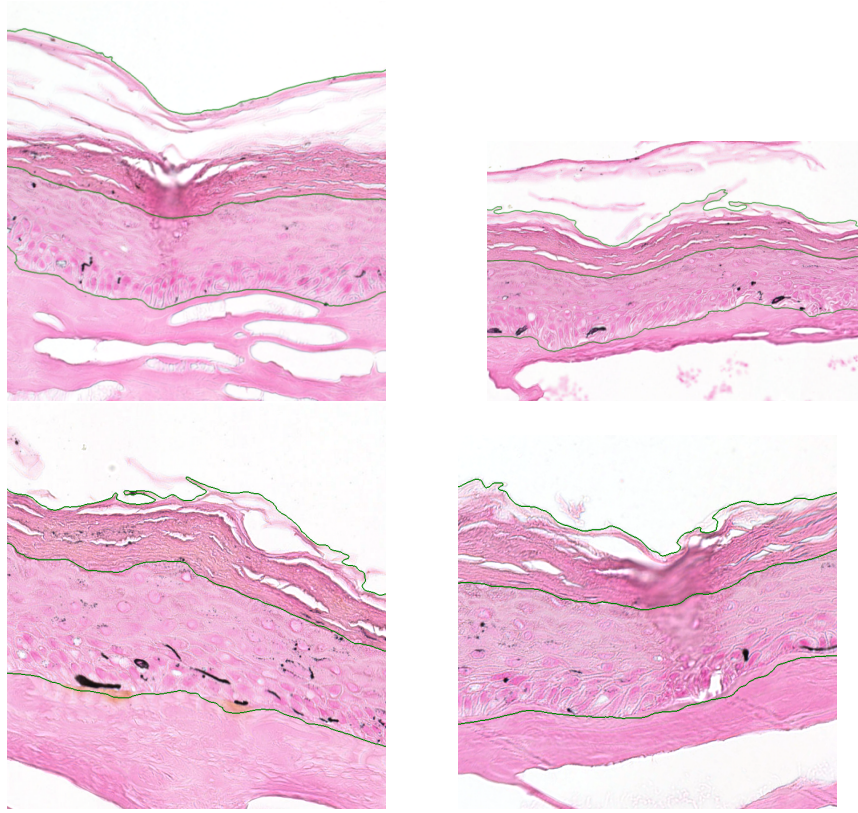


Fig. 4. Zoom-in on some test images to illustrate the results, as well as its robustness to acquisition artifacts. The contours of the segmentation computed with the final model are overlayed on the original images.

be large enough and neural network architectures that use downsampling layers impose that the dimensions be multiple of some $2n$ (where n is the number of such layers, supposing that the sampling steps are equal to 2). This approach is interesting not only for practical reasons (no need to compute any more crops and stitch them back together at prediction time) but also significantly alleviates border effects .

There are 23 images in the test database. Globally, the results were considered as very good by the final users. They are illustrated in Fig. 4. Only two errors were visible at first sight among the 23 images. They are shown in Fig. 5. Other errors are less visible. They correspond most of the time to a slight displacement of the obtained contour ⁵.

Tab. 1 gives some quantitative results on the test database. Accuracy values (the proportion of pixels that are correctly classified) show that incorrectly

⁵ One image in Fig. 4 contains such an error; let the reader try to find it!

classified pixels are three times less numerous with our proposed method than with the standard approach. The Jaccard index⁶ of the living epidermis region shows almost no improvement: this is natural, as this region can be correctly segmented based solely on local information. On the contrary, the Jaccard index of the *stratum corneum* shows a significant improvement, as the definition of this region heavily relies on non-local information. Finally the mean distance between predicted contours and ground truth (GT) contours confirms this improvement.

Table 1. Quantitative results on test database.

	Accuracy	Jaccard of <i>stratum corneum</i>	Jaccard of living epidermis	Mean distance to GT contour
Standard U-Net	98.33%	91.46%	94.24%	18 pixels
Proposed method	99.49%	97.43%	94.82%	4 pixels

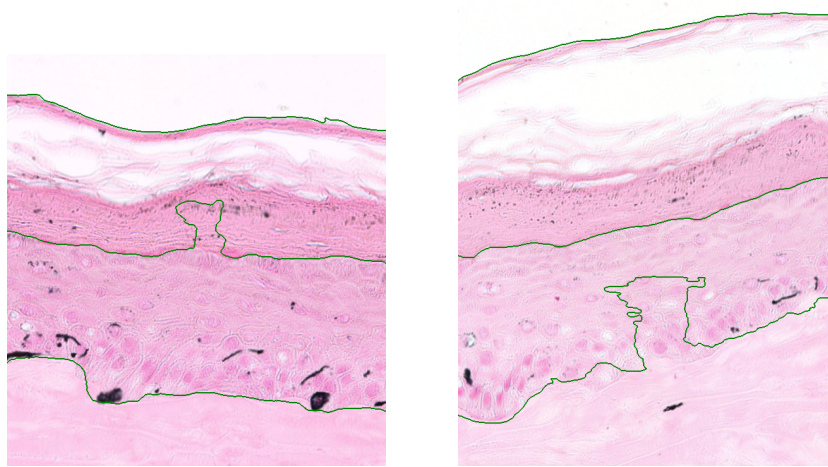


Fig. 5. Zoom-in onto the two more significant errors found on the 23 images of the test database.

Processing times are as follows. The standard U-Net takes 171 seconds to process the full 23 test images on a conventional laptop with a NVidia GeForce GTX 980M graphics card. The improved method, including the geodesic reconstruction, takes 407 seconds. We think that the pre-processing could be optimized, but the current version is already fast enough for the application at hand.

⁶ The Jaccard index of two sets is the ratio between the size of their intersection and the size of their union

5 Conclusion

A novel method to utilize global information within a convolutional neural network has been introduced. Based on the morphological reconstruction by dilation, it allows the network to take advantage of geodesic information.

This method has been successfully applied to the segmentation of histological images of reconstructed skin using a U-Net architecture. We believe that a similar improvement should be obtained with other fully convolutional neural networks, such as SegNet.

The method is being integrated in a complete software in order to use it in routine practice.

As a perspective, it would be interesting to explore other ways to use global information within convolutional neural networks, and compare them.

References

1. Badrinarayanan, V., Kendall, A., Cipolla, R.: SegNet: A Deep Convolutional Encoder-Decoder Architecture for Image Segmentation. arXiv:1511.00561 [cs] (Nov 2015), <http://arxiv.org/abs/1511.00561>, arXiv: 1511.00561
2. Bejnordi, B.E., the CAMELYON16 consortium: Diagnostic Assessment of Deep Learning Algorithms for Detection of Lymph Node Metastases in Women With Breast Cancer. JAMA 318(22), 2199–2210 (Dec 2017), <https://jamanetwork.com/journals/jama/fullarticle/2665774>
3. Fukushima, K.: Neural Network Model for a Mechanism of Pattern Recognition Unaffected by Shift in Position- Neocognitron. ELECTRON. & COMMUN. JAPAN 62(10), 11–18 (1979)
4. LeCun, Y., Boser, B., Denker, J.S., Henderson, D., Howard, R.E., Hubbard, W., Jackel, L.D.: Backpropagation Applied to Handwritten Zip Code Recognition. Neural Computation 1(4), 541–551 (Dec 1989), <http://www.mitpressjournals.org/doi/10.1162/neco.1989.1.4.541>
5. Ronneberger, O., Fischer, P., Brox, T.: U-Net: Convolutional Networks for Biomedical Image Segmentation. In: Navab, N., Hornegger, J., Wells, W.M., Frangi, A.F. (eds.) Medical Image Computing and Computer-Assisted Intervention – MICCAI 2015, pp. 234–241. No. 9351 in Lecture Notes in Computer Science, Springer International Publishing (Oct 2015)
6. Rosenfeld, A.: Digital topology. Amer. Math. Monthly 86, 621–630 (1979)
7. Vincent, L.: Morphological gray scale reconstruction in image analysis: Applications and efficient algorithms. IEEE Transactions on Image Processing 2(2), 176–201 (Apr 1993)
8. Wang, D., Khosla, A., Gargeya, R., Irshad, H., Beck, A.H.: Deep Learning for Identifying Metastatic Breast Cancer. arXiv:1606.05718 [cs, q-bio] (Jun 2016), <http://arxiv.org/abs/1606.05718>, arXiv: 1606.05718
9. Zeiler, M.D.: ADADELTA: An Adaptive Learning Rate Method. CoRR abs/1212.5701 (2012), <http://arxiv.org/abs/1212.5701>