



Multi-Objective Decision Making Optimization of a Residential Net Zero Energy Building in Cold Climate

Fatima Harkouss^{a, b}, Farouk Fardoun^a, Pascal-Henry Biwolé^{b, c}

^a*University Institute of Technology, Department GIM, Lebanese University, Saïda, Lebanon*

^b*Université Clermont Auvergne, CNRS, SIGMA Clermont, Institut Pascal, F-63000 Clermont-Ferrand, France*

^c*MINES Paris Tech, PSL Research University, PERSEE - Center for Processes, Renewable Energies and Energy Systems, CS 10207, 06 904 Sophia Antipolis, France*

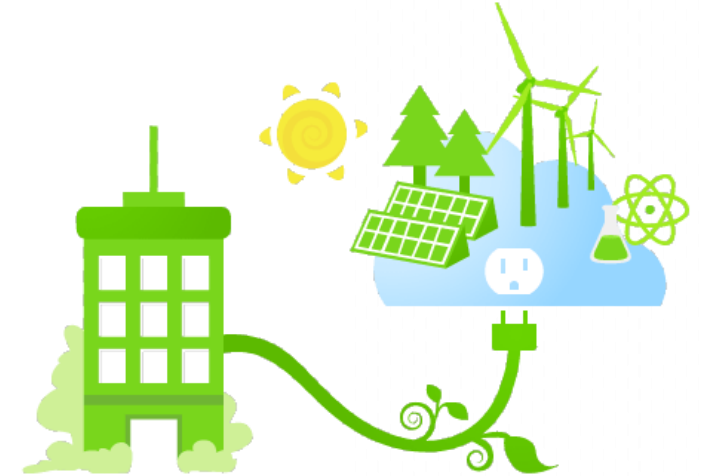
Presentation outline

- Introduction / Objective
- Case Study Description / Simulation
- Multi-Objective Optimization / Multi-Criteria Decision making
- Results / Discussion
- Conclusion / Future Studies



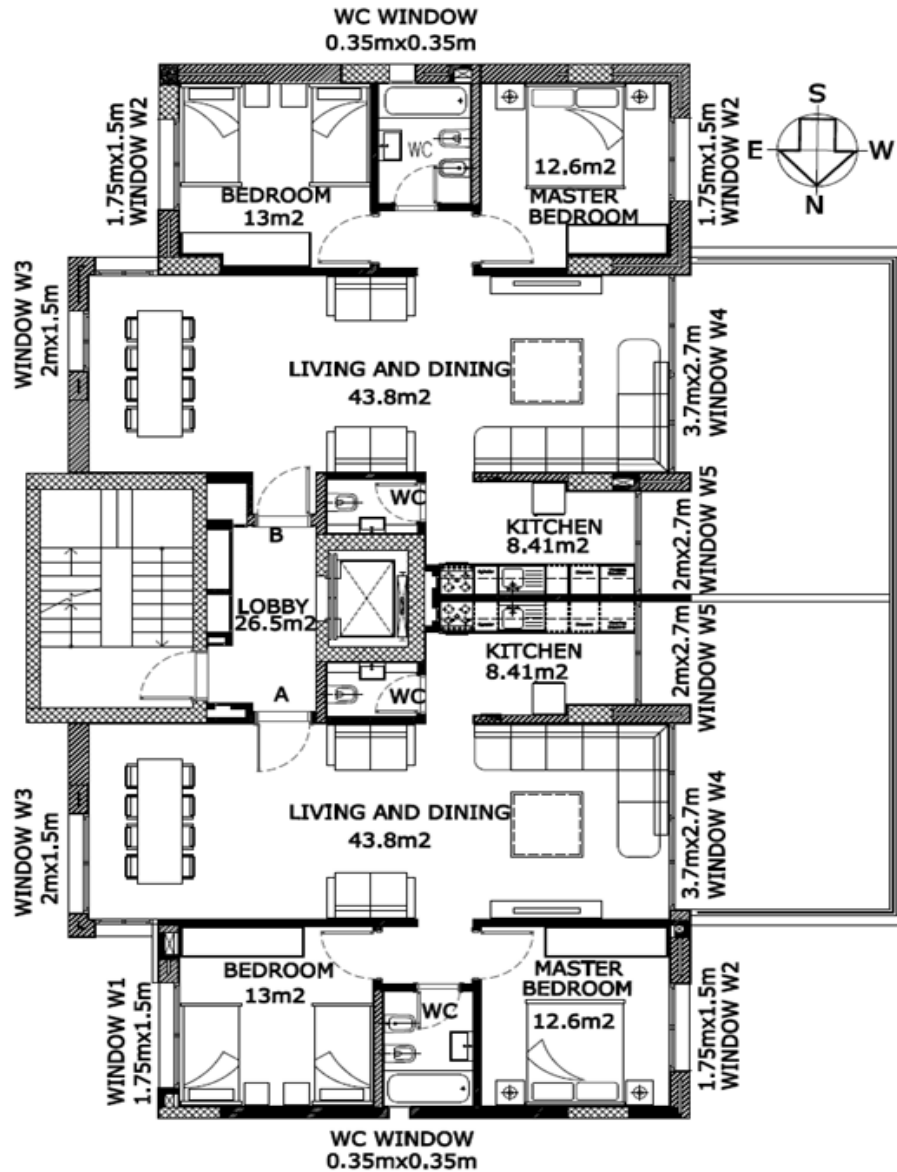
Introduction-Objective

- Net Zero Energy Buildings (NZEBs) are suggested to limit buildings energy consumption



- Investigate Cost-effective design options of a residential NZEB in Cedars, through Multi-Objective Optimization, followed by a Decision Making

Case Study



- Three stories building in Cedars
- Consisting of two apartments, each apartment is 102 m²

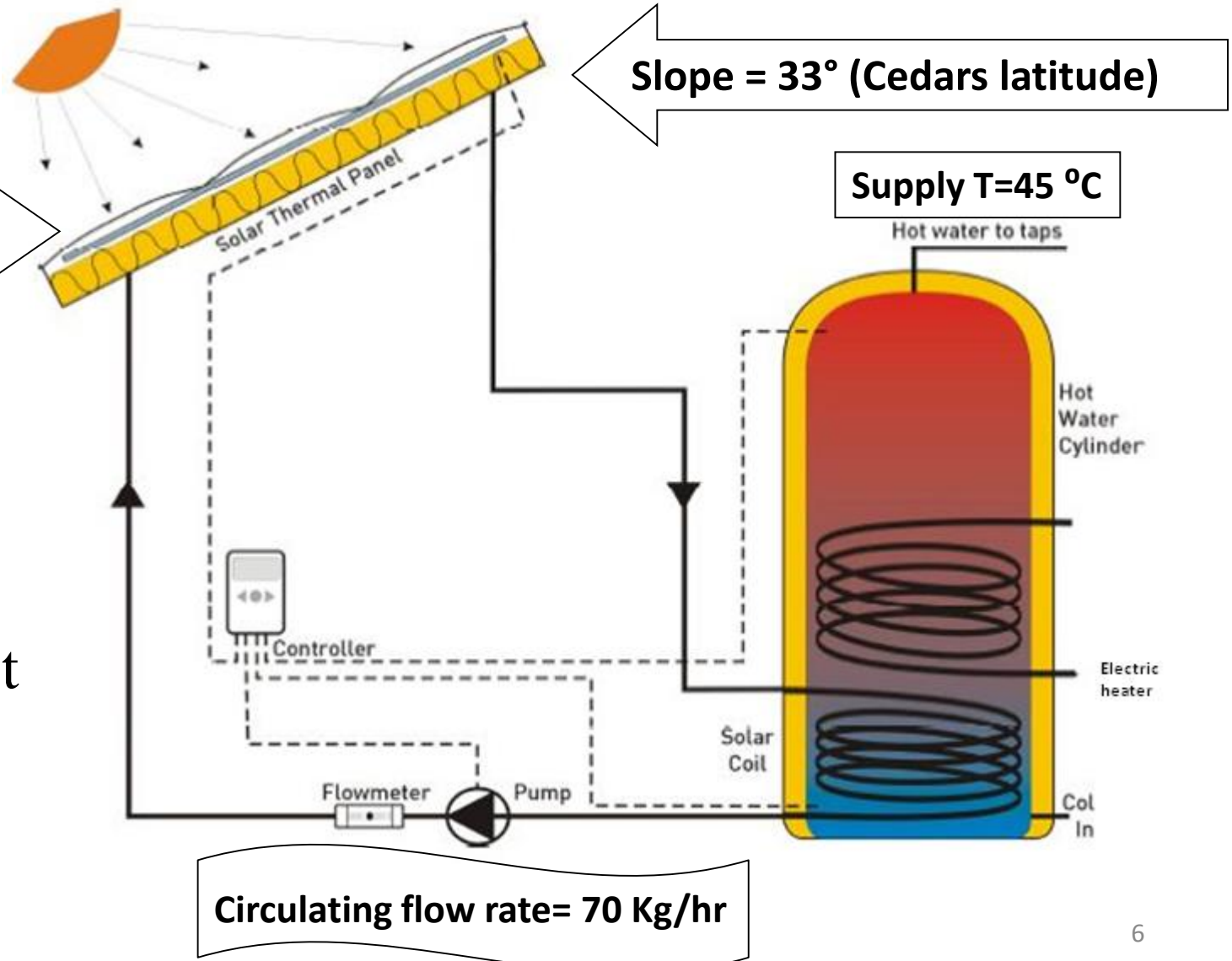
Design conditions

- Heating loads covered by natural gas condensing boiler, $\eta=98.3\%$
- Heating set point = 20°C
- Cooling loads covered by air source heat pump, COP= 2.9
- Cooling set point = 24°C

Solar Domestic Hot Water System (SDHW)

15 South oriented collectors connected in series of total area equal to 31.35 m²

- Flat plate active SDHW system + auxiliary Electric heater, to cover domestic hot water demands



Base case demands simulation

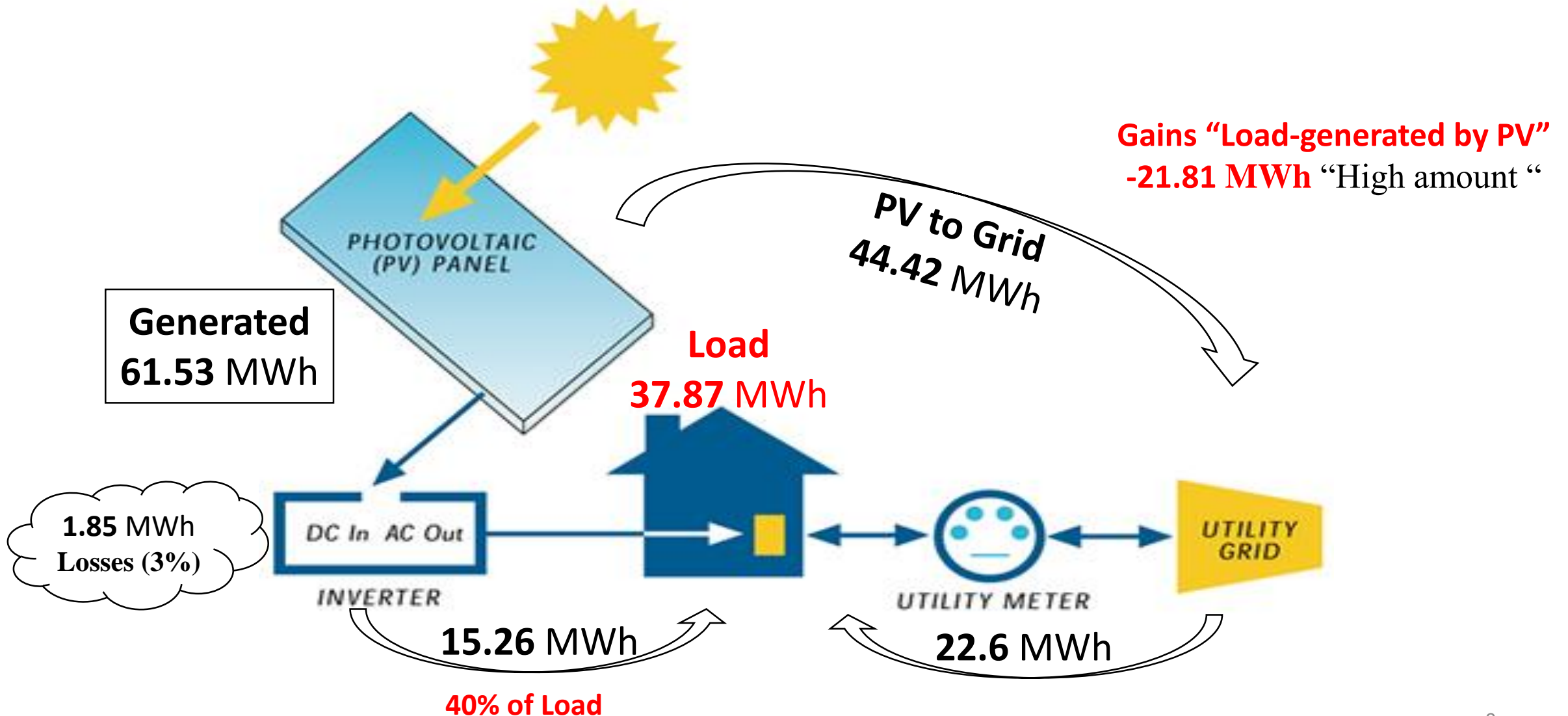
- Buildings different demands are simulated using TRNSYS
- Buildings' electrical loads are **61.57 KWh/y.m2** (37.78 MWh/y)
- Buildings' thermal loads are **73.47 KWh/y.m2** (45.19 MWh/y)

Photovoltaic System (PV)

- South oriented PV system on rooftop to generate electricity
- Building exploits utility power grid for storage
- Analytical calculation yield to 90 PV modules (Each 1.94 m²)
(15 in series, 6 in parallel)



Base case Annual Electric balances



Base case Life Cycle Cost (LCC)

- Economic evaluation of projects cost effectiveness

$$LCC = IC + f(N, rd) \times EC$$

IC	Initial cost for implementing design features for building envelope and HVAC system (\$), “Cost of PV + SDHW + Construction cost”
rd	Annual discount rate (%), “5% in this study”
N	Life period (year), “20 years in this study”
EC	Annual energy cost required to maintain building indoor comfort for the selected design and operating features (\$), “Cost of Electricity from grid + Cost of fuel for boiler”

- LCC, life period 20 years, is 181180 \$ (125 \$/month/ apartment)

Formulation of the optimization problem

- Multi-Objective Optimization (MOO) an effective technique to get the perfect design solution for a specific intention
- To start MOO, define the following:
 - 1-Objective functions to Minimize/ Maximize
 - 2- Decision variables
 - 3-Constraints



Objective functions to Minimize/ Maximize

- Electrical consumption = consumption of (cooling+ heating + appliances+ lighting+ SDHW (“Auxiliary electric heater + Pump”))
- Consumption from appliances and lighting not concerned in this study
- $f1 = \text{Min}$ (“Auxiliary electric heater + Pump” consumptions)
- $f2 = \text{Min}$ (Thermal demand)
- $f3 = \text{Min}$ (Difference between load and generation)
- $f4 = \text{Min}$ (LCC)



Decision variables

Description	Type	Values	Step
External walls, Roof insulation thickness (cm)	D	1,3,5,7,10	-
Type of double glazing: Krypton or Argon, U-value (W/m ² .K)	D	0.86, 1.4	-
Cooling set point (°C)	D	24, 25, 26	-
Heating set point (°C)	D	19, 20	-
Width window bedroom, master bedroom, kitchen, (m)	C	1 to 2	0.25
Width window Living and dining, (m)	C	1 to 3	0.25
Width window Living and dining, (m)	C	1 to 3.7	0.25
Number of solar collectors in series	C	1 to 20	1
SDHW pump flow rate (Kg/h)	C	50 to 120	5
Number of solar panels in series	C	1 to 20	1
Number of solar panels in parallel	C	1 to 40	1

D: Discrete, C: Continuous

Constraint

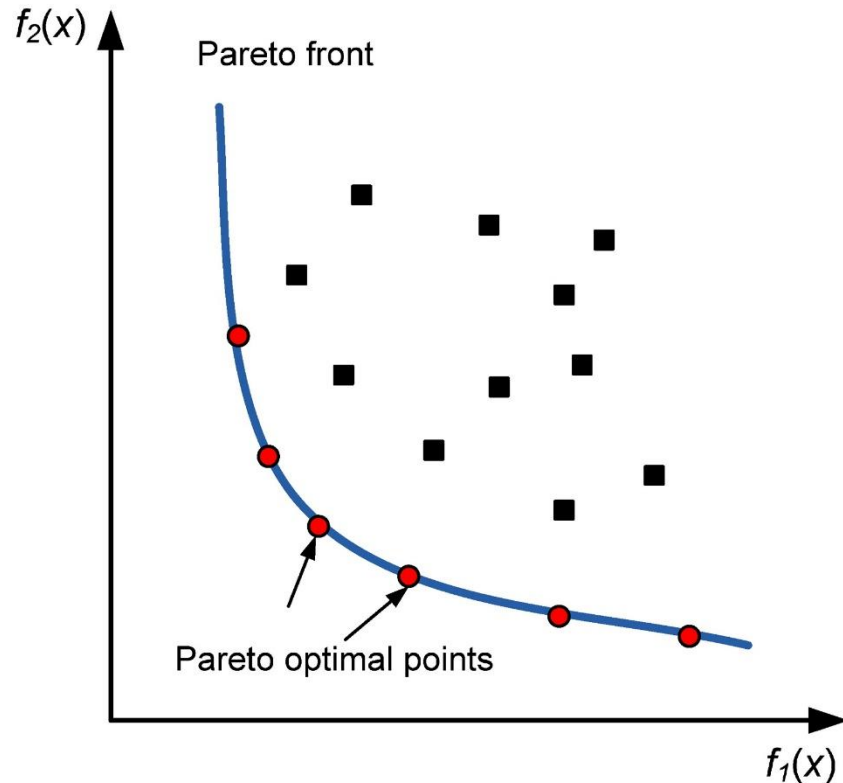
- Keep Comfort \rightarrow Average Predicted Mean Vote $|PMV| \leq 0.5$



Optimization tool / Algorithm

- Optimization using TRNSYS coupled with MOBO “Multi-Objective Building Optimization Tool”
- The non-sorting genetic algorithm (NSGA-II), is adopted
- The used parameters’ setting of NSGA are:
 - 1- Population size = 40
 - 2- Generation number = 25

Pareto Front

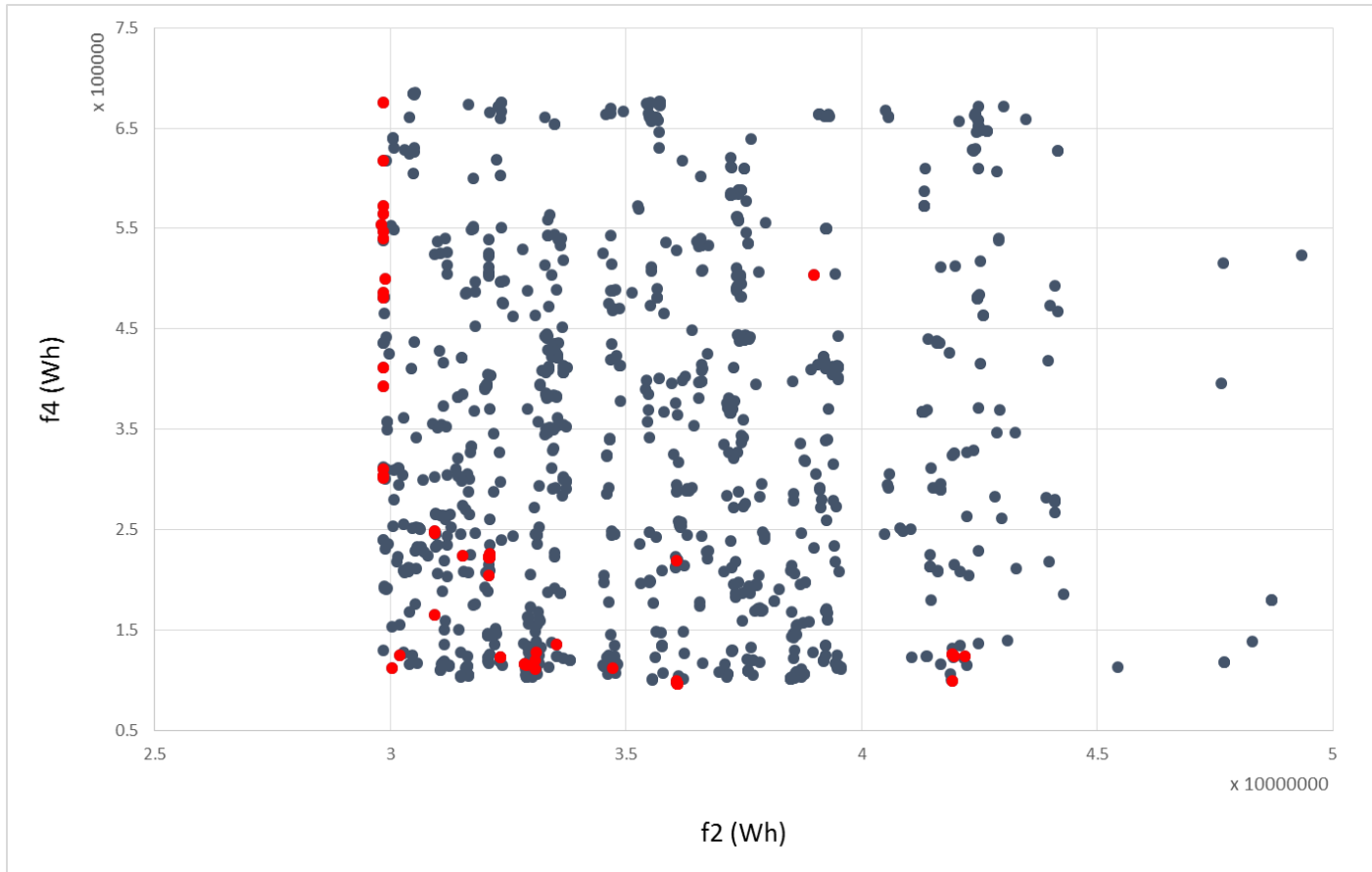


- MOO results are sets of non-dominated solutions called Pareto optimal solutions represented as a Pareto Front
- Each point of the Pareto Front is a possible best solution

Black: design Variable Space, Dominated Variants

Red: Possible Solutions, Non-Dominated Variants

Pareto Front



- Four-objective optimization generates Four-dimensional (4D) problem space
- Projecting 4D-Pareto-front on 2D-Graph, points belonging to Pareto Front may incorrectly appear to be dominated variants

f2: Thermal Load, f4: LCC

Blue: Dominated Variants , **Red:** Non-Dominated Variants

Multi-Criteria Decision making (MCDM)

- MCDM process to select the final optimal solution among all available possibilities
- Elimination and Choice Expressing the Reality (ELECTRE III) method classifies Pareto front solutions, to choose the most adequate solution
- To start ELECTRE III, the decision maker must assign the following:
 - 1-Indifference, Preference and Veto Thresholds
 - 2-Weights for each objective function using Analytical Hierarchy Process (AHP)

Multi-Criteria Decision making (MCDM)

- ELECTRE III parameters:

Threshold	Percentage relative to objective function average
Indifference	5%
Preference	10%
Veto	30%

	f1	f2	f3	f4
Weights	0.25	0.25	0.25	0.25

Decision making Results

- Best solution after ELECTRE III ranking

	f1 (MWh) “SDHW electric consumption”	f2 (MWh) “Thermal Loads”	f3 (MWh) “Load-generation”	f4 (1000\$) “LCC”
Best solution	3.94	30.19	-0.33	124.84
Base case value	4.80	45.19	-21.82	181.18
% difference	17.91	33.19	-98.48	31.09

Decision making Results

- Best solution after ELECTRE III ranking

	Walls insulation	Roof insulation	Windows U-value	Cooling set point	Heating set point
Unit	(cm)	(cm)	(W/m ² .K)	(°C)	(°C)
Base case	5	1	1.4	24	20
Optimal case	10	10	0.86	25	19
	Solar collectors	Pump flow	Number PV	Eastern WWR	Western WWR
Unit	-	(Kg/h)	-	(%)	(%)
Base case	15	70	90	23.43	59.46
Optimal case	8	115	72	21.87	35.15

Conclusion

- Significant potential to improve energy performance of residential NZEB in cold climate of Cedars by using proven passive strategies
- The optimum design parameters decreases annual thermal load and LCC by 33.19% and 31.09% respectively, compared to the baseline model
- Envelop high level of insulation is a key parameter to decrease the high heating demands

Future studies



- Investigate other passive design, and Renewable Energy options
- Investigate different climatic zones in Lebanon and France
- Sensitivity analyses of Decision maker preferences and design parameters
- Final goal is an attempt to define certain weighting factors for the key parameters to attain NZEB