



HAL
open science

Full field modeling in a level set framework of Zener pinning phenomenon - discussion of classical limit mean grain size equation.

Benjamin Scholtes, Dmitrii Nikolaevich Ilin, Amico Settefrati, Nathalie Bozzolo, Andrea Agnoli, Marc Bernacki

► To cite this version:

Benjamin Scholtes, Dmitrii Nikolaevich Ilin, Amico Settefrati, Nathalie Bozzolo, Andrea Agnoli, et al.. Full field modeling in a level set framework of Zener pinning phenomenon - discussion of classical limit mean grain size equation.. Superalloys 2016, Sep 2016, Seven Springs, Pennsylvania, United States. hal-01430741

HAL Id: hal-01430741

<https://minesparis-psl.hal.science/hal-01430741>

Submitted on 10 Jan 2017

HAL is a multi-disciplinary open access archive for the deposit and dissemination of scientific research documents, whether they are published or not. The documents may come from teaching and research institutions in France or abroad, or from public or private research centers.

L'archive ouverte pluridisciplinaire **HAL**, est destinée au dépôt et à la diffusion de documents scientifiques de niveau recherche, publiés ou non, émanant des établissements d'enseignement et de recherche français ou étrangers, des laboratoires publics ou privés.

Full-field Modeling of the Zener Pinning Phenomenon in a Level Set Framework - Discussion of Classical Limiting Mean Grain Size Equation

B. Scholtes^a, D. Ilin^a, A. Sattefrati^b, N. Bozzolo^a, A. Agnoli^c, M. Bernacki^a

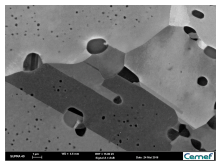
^a Mines ParisTech, CEMEF – Centre de mise en forme des matériaux, CNRS UMR 7635, CS 10207 rue Claude Daunesse, 06904 Sophia Antipolis cedex, France

^b Transvalor SA, 694 avenue Docteur Maurice Donat, 06250 Mougins, France

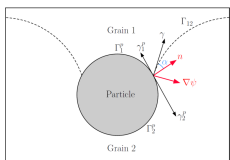
^c Snecma Gennevilliers, 171 boulevard Valmy, 92702 Colombes, France

Context

Pinning of grain boundaries by second phase particles is widely used to control the grain size during forming process of superalloys.



BSE image of precipitates in nickel based superalloy (S.Vernier, CEMEF, France)



$$\sin(\alpha) = (\gamma_2^0 - \gamma_1^0) / \gamma$$

Classical Zener pinning law predicting the limiting mean grain size [1]:

$$\langle R_f \rangle = K \frac{\langle r_p \rangle}{f^m}$$

$\langle R_f \rangle$ – mean grain size, $\langle r_p \rangle$ – mean particle radius, f – volume fraction of particles; K, m – parameters depending on the assumptions.

Relation to the volume fraction of particles located at grain boundaries f_{gb} [2]:

$$\langle R_f \rangle = K \frac{\langle r_p \rangle}{f_{gb}^m}$$

Numerical model

Level Set Framework:

LS function ψ is defined over a domain Ω as the signed distance to the interface Γ [3]:

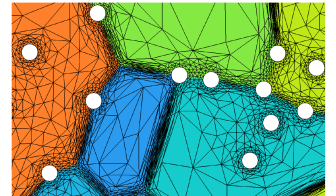
$$\forall t \begin{cases} \psi(x, t) = \pm d(x, \Gamma(t)), & x \in \Omega, \\ \Gamma(t) = \{x \in \Omega, \psi(x, t) = 0\}, \end{cases}$$

$$\begin{cases} \frac{\partial \psi_i(x, t)}{\partial t} - M \gamma \Delta \psi_i(x, t) + \vec{v}_e \cdot \nabla \psi_i(x, t) = 0, \\ \psi_i(x, t = 0) = \psi_i^0(x), \end{cases}$$

t – time, M – mobility, γ – interface energy, \vec{v}_e – velocity due to stored energy gradient

Boundary condition at precipitate/matrix interface:

$$\frac{\nabla \psi}{\|\nabla \psi\|} \cdot \vec{n} = \nabla \psi \cdot \vec{n} = \sin(\alpha)$$



- Adaptive metric based meshing remeshing tool [4] was used.

- New direct and parallel reinitialization algorithm [5] was incorporated.

- Recoloring scheme [6] was used to reduce the number of LS functions needed to represent the polycrystal

Simulation parameters:

Material: Inconel 718
 $M = 2.3 \times 10^{-23} \text{ m}^4/(\text{Js})$
 $\gamma = 0.6 \text{ J/m}^2$

$\alpha = 0^\circ$ (incoherent precipitates)
 Particle radii r_p : 0.2, 0.4, 0.6, 0.8 μm
 Area fraction f : 1-8 %

Domain size: $0.3 \times 0.3 \text{ mm}^2$,
 Number of grains: 2600
 Initial mean grain size: $\langle R_0 \rangle = 3.35 \mu\text{m}$

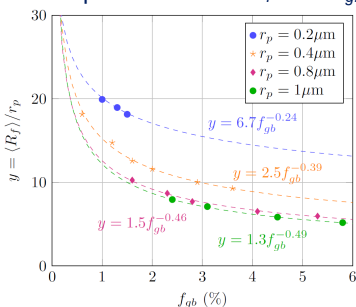
Time step: 0.1 s
 16 CPUs (Xeon 1.2 GHz)
 (computation time: 1-2 days)

2D simulation results for grain growth: New mean field model for the limiting mean grain size

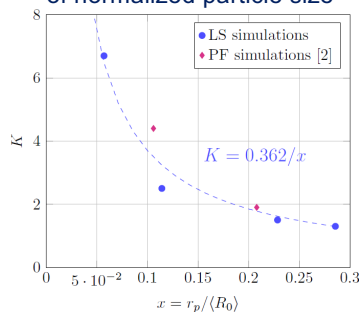
f_{gb} and $\langle R_f \rangle$ are measured at the steady state (when $\langle R_f \rangle$ becomes stable)

- 1) The radius of precipitates (for a given f) affects drastically the grain growth kinetics
- 2) K and m were found to depend on $r_p / \langle R_0 \rangle$ (see figures for K and m)

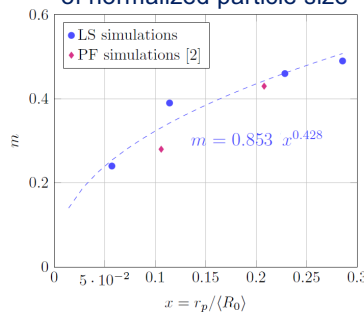
Dependence of $\langle R_f \rangle$ on f_{gb}



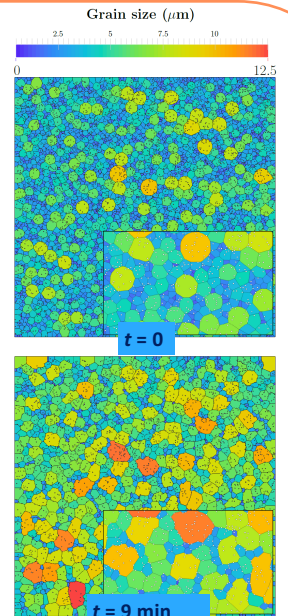
Parameter K as a function of normalized particle size



Parameter m as a function of normalized particle size



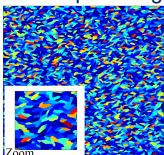
Expression obtained for the limiting grain size: $\langle R_f \rangle = 0.362 \langle R_0 \rangle f_{gb}^{-0.853} (r_p / \langle R_0 \rangle)^{0.428}$



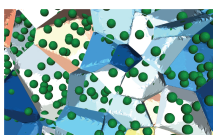
Microstructure at the early and final stages of the simulation ($r_p = 0, 4 \mu\text{m}$, $f = 3\%$)

Current work

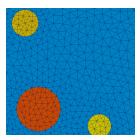
△ Initial microstructures with non-equiaxed grains



△ 3D simulations



△ Evolutive second phase particles



References

- [1] C. Zener - C. S. Smith, Trans. AIME 175, 15, (1948).
- [2] N. Moelans, B. Blanpain, P. Wollants, Acta Mater 54, 1175-1184, (2006).
- [3] A. Agnoli, N. Bozzolo, R. Logé, J.-M. Franchet, J. Laigo, M. Bernacki, Comput Mater Sci 89, 233-241, (2014).
- [4] H. Resk, L. Delannay, M. Bernacki, T. Coupez, R. Logé, Modelling Simul Mater Sci Eng 17, 075012, (2009).
- [5] M. Shakoov, B. Scholtes, P.-O. Bouchard, M. Bernacki, Appl Math Model 39 (23-24), 7291-7302, (2015).
- [6] B. Scholtes, M. Shakoov, A. Sattefrati, P.-O. Bouchard, N. Bozzolo, M. Bernacki, Comput Mater Sci 109, 388-398, (2015).