



HAL
open science

Delamination of pipeline steels: determination of an anisotropic cleavage criterion

Franck Tankoua, Jérôme Crépin, P. Thibaux, M. Arafin, Steven Cooreman,
Anne-Françoise Gourgues

► **To cite this version:**

Franck Tankoua, Jérôme Crépin, P. Thibaux, M. Arafin, Steven Cooreman, et al.. Delamination of pipeline steels: determination of an anisotropic cleavage criterion. *Mechanics & Industry*, 2014, 15, pp.45-50. 10.1051/meca/2014001 . hal-01055448

HAL Id: hal-01055448

<https://minesparis-psl.hal.science/hal-01055448v1>

Submitted on 12 Aug 2014

HAL is a multi-disciplinary open access archive for the deposit and dissemination of scientific research documents, whether they are published or not. The documents may come from teaching and research institutions in France or abroad, or from public or private research centers.

L'archive ouverte pluridisciplinaire **HAL**, est destinée au dépôt et à la diffusion de documents scientifiques de niveau recherche, publiés ou non, émanant des établissements d'enseignement et de recherche français ou étrangers, des laboratoires publics ou privés.

Delamination of pipeline steels: determination of an anisotropic cleavage criterion

F. TANKOUA^{1,a}, J. CREPIN¹, P. THIBAUX², M. ARAFIN², S. COOREMAN²
AND A.F. GOURGUES¹

¹ MINES ParisTech, Centre des Matériaux, UMR CNRS 7633, BP 87, 91003 Evry Cedex, France

² ArcelorMittal R&D Gent, Pres. J.F. Kennedylaan 3, 9060 Zelzate, Belgium

Received 17 June 2013, Accepted 3 January 2014

Abstract – Cleavage fracture anisotropy has been studied on a ferrite-bainite low alloy pipeline steel plate. Mechanical tests have been performed on smooth and notched bars taken along the three principal directions of the plate at temperatures between 20 °C and –196 °C, and analyzed by finite element calculations with an anisotropic plasticity model. The fracture mode of specimens tested along the normal direction differs from that of specimens taken along the two other directions, together with a lower critical cleavage stress. This difference seems to be related to microtexture anisotropy and might explain the sensitivity of this steel to delamination at low temperatures.

Key words: Delamination fracture / anisotropy / cleavage / microtexture / pipeline steels

Résumé – **Délaminage des aciers pour gazoducs : détermination d'un critère anisotrope de rupture par clivage.** L'anisotropie de rupture par clivage a été étudiée sur une tôle d'acier faiblement allié, ferrite-bainitique, pour gazoducs. Des essais mécaniques ont été effectués sur éprouvettes axi-symétriques lisses et entaillées dans les trois directions principales de la tôle, pour des températures comprises entre 20 °C et –196 °C, et analysés par éléments finis à l'aide d'un modèle de plasticité anisotrope. Le mode de rupture dans la direction normale à la tôle diffère de celui dans les deux autres directions, avec une contrainte critique de clivage plus basse. Cette différence est reliée à l'anisotropie de microtexture et pourrait expliquer la sensibilité de cet acier au délaminage à froid.

Mots clés : Délaminage / anisotropie / clivage / microtexture / gazoducs

1 Introduction

Delamination cracking is commonly observed during Charpy or Battelle impact tests on high strength pipeline steels. It involves brittle cracking parallel to the rolling plane and tends to reduce the steel toughness at low temperatures [1–3]. Many authors [1–11] have investigated possible causes and effects of delamination on the mechanical properties of steels. Delamination fracture has been attributed to texture and microstructure anisotropy. It seems to be more pronounced for temperatures within the ductile-to-brittle transition but there is no agreement on the effect of delamination as there are only scarce results on delamination initiation and the interaction of delamination cracks with the main crack propagation. Kalyanam [12] investigated the stress state induced by a

static delamination crack in Al-Li alloys, but with no initiation criterion for that crack. Baldi [13] showed that delamination in low alloy steels occurs when the stress along the normal direction (ND) of the plate exceeds a critical value, which is lower than the critical cleavage stress along the rolling (RD) and long transverse (TD) directions. This difference was attributed to shape anisotropy of ferrite grains. The present study aims at providing an anisotropic critical cleavage stress criterion in relation with microstructural parameters, to be used for the modeling of delamination crack initiation. Tensile tests on smooth and notched bars from a pipeline steel plate have been performed at various temperatures, followed by an investigation of the fracture mechanisms. An anisotropic yield criterion has been set to analyze the tests and to derive a value for the critical cleavage stress along RD, TD and ND, and was related to microtexture anisotropy of the plate.

^a Corresponding author: franck.tankoua@ensmp.fr

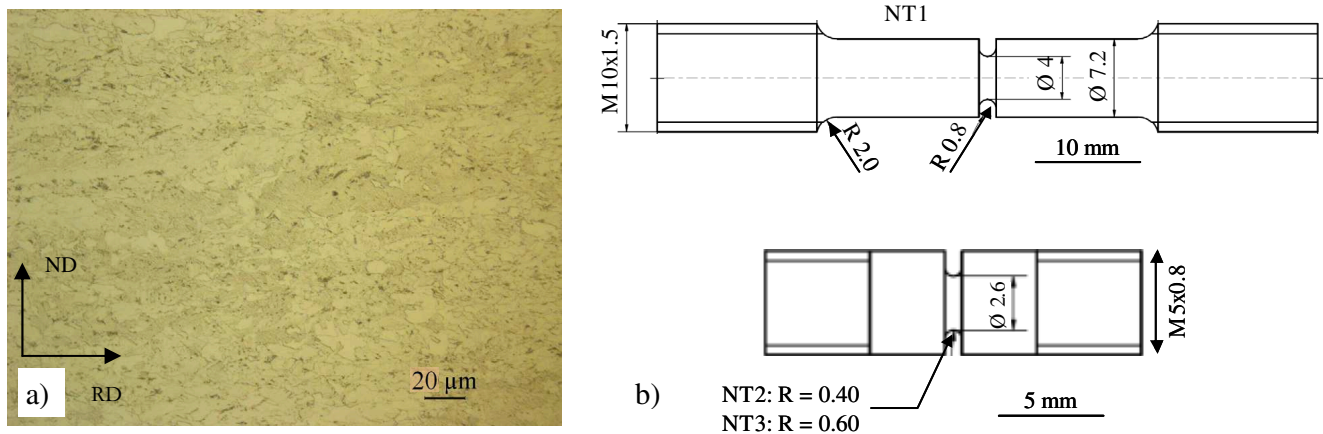


Fig. 1. (a) Optical micrograph of the steel. (b) Geometry of NT1 (top), NT2 and NT3 (bottom) specimens.

Table 1. Summary of tensile tests, indexed using corresponding specimen geometries.

	−196 °C	−100 °C	−90 °C	−80 °C	−70 °C	−60 °C	−55 °C	−50 °C	−40 °C	20 °C
RD	NT3	NT1								NT1, UT1
TD	NT3	NT1, UT1								NT1, UT1
ND		NT2, UT2	NT2	NT2	NT2	NT2	NT2	NT2	NT2	NT2, UT2

2 Experimental procedure

2.1 Material

A 19.5-mm thick, ferritic-bainitic plate obtained after thermomechanical controlled processing was used (Fig. 1a). It is a micro-alloyed low carbon manganese steel. Its 0.2% proof stress, tensile strength and fracture elongation at room temperature are respectively 580 MPa, 640 MPa, and 42%.

2.2 Mechanical tests

Tensile tests on smooth and notched specimens have been performed by using a 250 kN servohydraulic Instron 8500 machine. Cooling was ensured using a climate chamber, except for the tests performed at −196 °C; temperature was controlled using a thermocouple spot-welded on the top of the specimen. Tests at −196 °C were performed in liquid nitrogen. Two (resp. three) geometries, UT1-2 (resp. NT1-3) were considered for smooth (resp. notched) specimens (Fig. 1b). UT specimens were tested with an elongation rate of 10^{-3} s^{-1} ; a load line displacement velocity of $10^{-3} \text{ mm}\cdot\text{s}^{-1}$ was used for notched specimens. The gauge length of smooth specimens was 36 mm (resp. 5 mm) for UT1 (resp. UT2). NT2 and NT3 specimen geometries were designed for this study [14], so that specimens could be taken along ND. At 30% of diameter reduction, axial stresses up to 2000 MPa (typical value for cleavage normal to ND) [13] were expected to be found over a region containing both equiaxed and bainitic ferrite. More temperature levels were considered for tests

along ND because of the lower amount of literature data along ND (Tab. 1).

Elongation of smooth specimens was measured using an extensometer (UT1 geometry) or by applying a stiffness correction on the load vs. load line displacement curve (UT2 geometry). For notched specimens, a radial extensometer was used to measure the reduction of diameter along ND (resp. TD) for specimens taken along RD and TD (resp. along ND). Some tests were (repeatedly) interrupted at room temperature, after which the extensometer was temporarily rotated by 90° with respect to the tensile axis, and the new value of the reduction of diameter was recorded. The ratio of these two values was used as an anisotropy coefficient.

2.3 Observations

Fracture surfaces were observed with scanning electron microscopy (SEM) in secondary electron imaging. This allowed first identification of fracture modes and estimate of the shear percentage, i.e. the ratio of ductile fracture area to the total area of the fracture surface (projected along the tensile axis). Then, cleavage fracture was more quantitatively studied. The propagation path of the first cleavage crack was studied using stereological pairs, 3D reconstruction of the fracture surface (MeX software) together with in-house software to calculate tilt and twist components of misorientation between neighboring facets [15]. Microtexture was analyzed using electron backscatter diffraction (EBSD) on polished sections ($190 \times 190 \mu\text{m}^2$) with a step size of 1 μm . The mean free

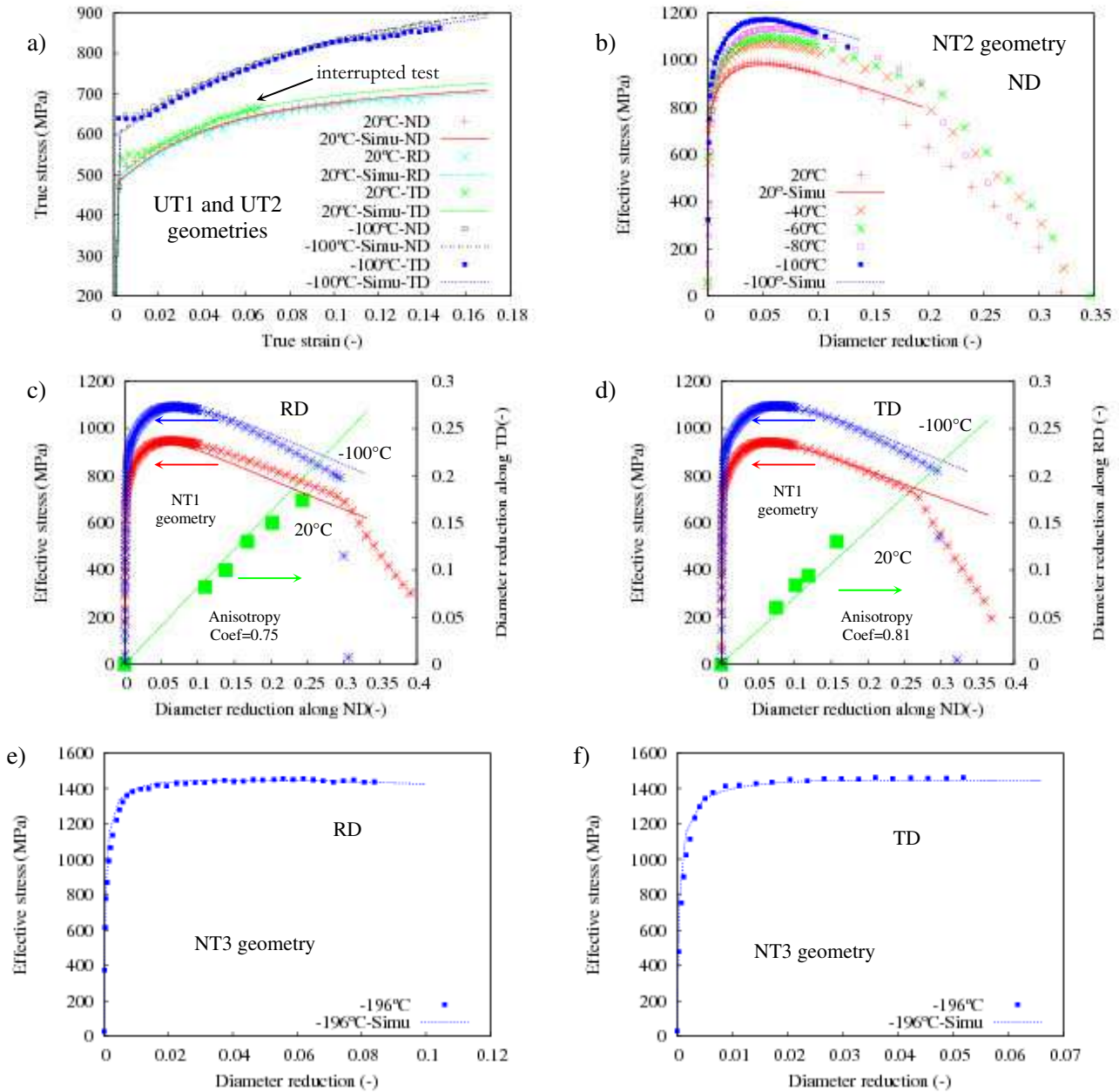


Fig. 2. Tensile curves of (a) smooth, (b)–(f) notched specimens. Symbols: experiments; lines: model predictions.

path of cleavage microcracks was determined by considering crystals with a nearly common orientation of $\{001\}$ planes normal to the investigated loading axis. The size distribution of such “potential cleavage facets” was compared to the fracture surface appearance.

3 Experimental results

3.1 Tensile tests (smooth and notched specimens)

Figure 2 summarizes the results of the tensile tests, together with the simulated curves. More information on

the numerical model can be found in Section 4. The effective stress was calculated as the load divided by the initial cross-section and diameter reduction was normalized by the initial diameter of the minimal section. Test reproducibility was good (difference in stress lower than 5%), so that only one curve per condition is plotted in Figure 2.

Work hardening is higher at $-100\text{ }^\circ\text{C}$ than at $20\text{ }^\circ\text{C}$. Anisotropy in strength is not significant but a constant anisotropy coefficient (defined in 2.2), lower than 1, was found along RD and TD (Figs. 2c, 2d). At $-100\text{ }^\circ\text{C}$ along ND, the minimal section of (brittle) NT specimens remained circular all along the test (anisotropy ratio set to 1.0). These curves also showed a brutal drop of the

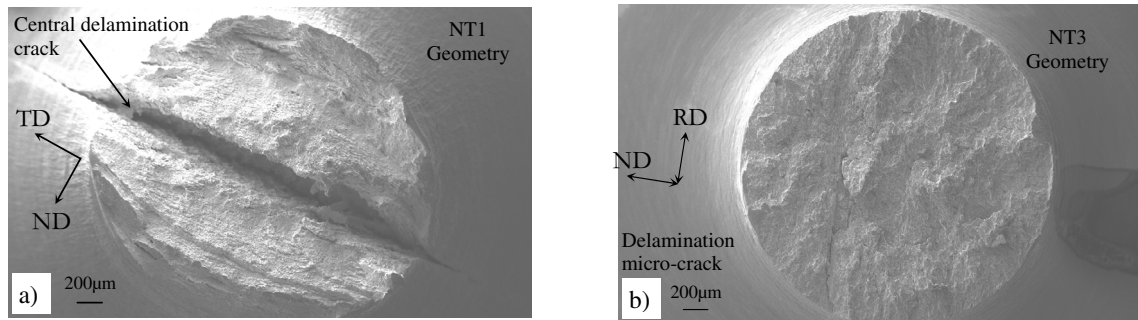


Fig. 3. Fracture surfaces (a) of a NT1 specimen (RD, $-100\text{ }^{\circ}\text{C}$) and (b) of a NT3 specimen (TD, $-196\text{ }^{\circ}\text{C}$).

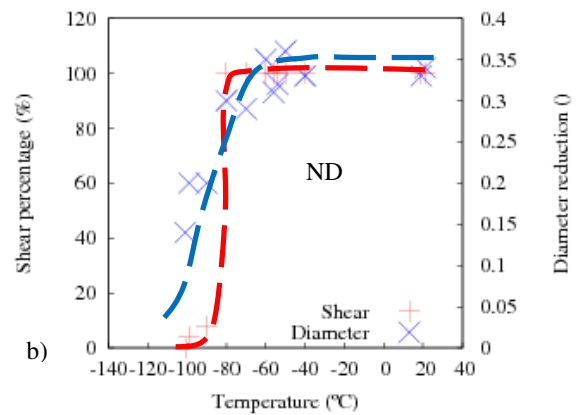
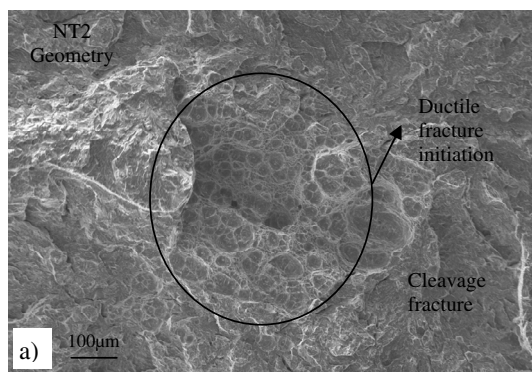


Fig. 4. (a) Fracture surface of a NT2 specimen (ND, $-90\text{ }^{\circ}\text{C}$). (b) Evolution of the shear percentage and diameter reduction (at fracture) with testing temperature (NT2 specimens tested along ND).

effective stress at the end of tests at $-100\text{ }^{\circ}\text{C}$. At this temperature, pop-ins were observed before final failure, in the load vs. load line displacement curves (not shown here).

3.2 Fracture mechanisms

For specimens pulled along RD and TD, three fracture modes were in competition: ductile, delamination and (flat) cleavage fracture. At $20\text{ }^{\circ}\text{C}$, fully ductile fracture was observed. At $-100\text{ }^{\circ}\text{C}$, ductile fracture with a central delamination crack was observed (Fig. 3a). At $-196\text{ }^{\circ}\text{C}$, flat cleavage cracking, starting far from the notch roots was accompanied with some delamination micro-cracks (Fig. 3b). Specimens tested along ND only exhibited ductile and (flat) cleavage fracture. Three temperature domains were distinguished from these fracture mechanisms: the upper shelf ($T > -80\text{ }^{\circ}\text{C}$) with fully ductile fracture, the transition domain ($-100\text{ }^{\circ}\text{C}$ up to $-80\text{ }^{\circ}\text{C}$) with ductile initiation followed by cleavage fracture (Fig. 4a), the lower shelf ($T < -100\text{ }^{\circ}\text{C}$) with large cleavage facets elongated along RD. Figure 4b shows that the transition in shear percentage is steeper than the transition in diameter reduction at fracture.

Quantitative fractography was performed on a large facet where cleavage fracture was found to have initiated

(Fig. 5a). Tilt and twist angles between two neighboring regions across the facet boundary (no direct cleavage crack propagation from one region to the other) and within the considered facet (i.e., with easy cleavage crack propagation between the two regions) are presented in Figure 5b. A boundary curve separating the tilt and twist angles for which the propagation of the crack in the same facet, from those which lead to the generation of a new facet was tentatively plotted despite the low number of data for high values of the twist angle. According to that curve, a tilt angle of 20° , or a twist angle up to about 13° (yet with almost no tilt component) was not high enough to arrest cleavage crack propagation. In a first approximation, a misorientation angle of 15° was considered to delimit so-called “potential cleavage facets” from EBSD maps.

3.3 Microtexture

The shape and size of the largest cleavage facets, determined using EBSD in the (RD, TD) plane (Fig. 6) are similar to those of the large elongated cleavage facet of Figure 5a. From Figure 6c, cleavage crack initiation could possibly be favored in the delamination plane due to the microtexture of the material.

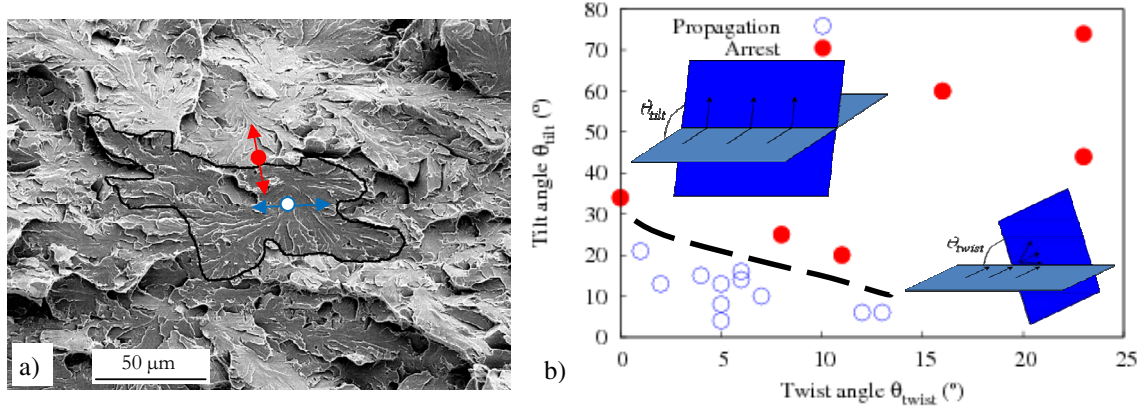


Fig. 5. (a) Fracture surface of an NT2 specimen tested along ND at $-100\text{ }^{\circ}\text{C}$. (b) Local cleavage propagation or arrest according to measured tilt and twist components of misorientation (region delineated in black in (a)).

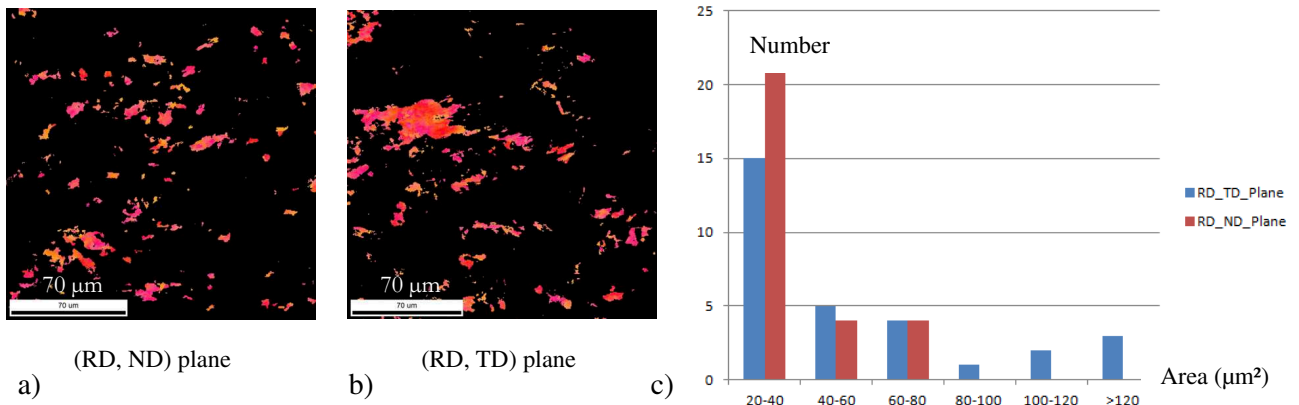


Fig. 6. (a,b) Potential cleavage facets using a threshold misorientation angle of 15° between $\{100\}$ planes and normal to the observed sample plane. (c) Area distribution (in number) of potential cleavage facets.

4 Anisotropic cleavage failure criterion

The critical cleavage stress at the onset of fracture of NT specimens was estimated from mechanical analysis. An elastic-plastic constitutive model, with an isotropic hardening rule coupling a linear and an exponential term (Voce equation) was chosen. At $20\text{ }^{\circ}\text{C}$ and $-100\text{ }^{\circ}\text{C}$, the Bron-Besson anisotropy yield criterion [16] was used. Constitutive parameters were identified from notched and smooth tensile curves along all directions, together with anisotropy coefficients [14]. At $-196\text{ }^{\circ}\text{C}$, a von Mises yield criterion was used because of the low number of available results (only two tensile tests on notched specimens). Finite element calculations were performed using quadratic bricks with reduced integration, finite strain formalism, a Newton-Raphson iterative scheme for global convergence and an implicit integration scheme for constitutive equations. After a study of the mesh size effect, a minimum element size at notch root equal to $100\text{ }\mu\text{m}$ (ensuring convergence with respect to the mesh size) was considered for calculations. One-eighth of the specimen was modeled and uniform displacement was prescribed at the bottom edge together with usual symmetry conditions. Experimental and predicted curves are in good agreement before the onset of fracture (Fig. 3).

From axial stress distributions at the onset of fracture (Fig. 7), the value of axial stress was determined at the node corresponding to the experimentally observed cleavage initiation crack site, at $-100\text{ }^{\circ}\text{C}$ (resp. $-196\text{ }^{\circ}\text{C}$) for specimens tested along ND (resp. RD and TD). The critical cleavage stresses obtained are $2010 \pm 50\text{ MPa}$ and $2500 \pm 100\text{ MPa}$ respectively along ND and RD. The value of this critical stress was not easy to estimate along TD because the fracture surface showed multiple crack initiation sites, and sometimes delamination. The only information extracted from calculations is that the critical stress is at least equal to 2300 MPa .

5 Discussion and concluding remarks

NT specimens revealed a strong anisotropy in plastic yield, with easier deformation along ND compared to RD and TD, and also in cleavage fracture. At $T > -80\text{ }^{\circ}\text{C}$, ductile fracture occurs whatever the specimen geometry and loading direction. For $-100\text{ }^{\circ}\text{C} < T < -80\text{ }^{\circ}\text{C}$, ductile crack initiation followed by cleavage propagation occurred when pulling along ND. At $T < -100\text{ }^{\circ}\text{C}$, cleavage fracture occurred for specimens taken along ND, and delamination cracks (microcracks at $-196\text{ }^{\circ}\text{C}$) were still

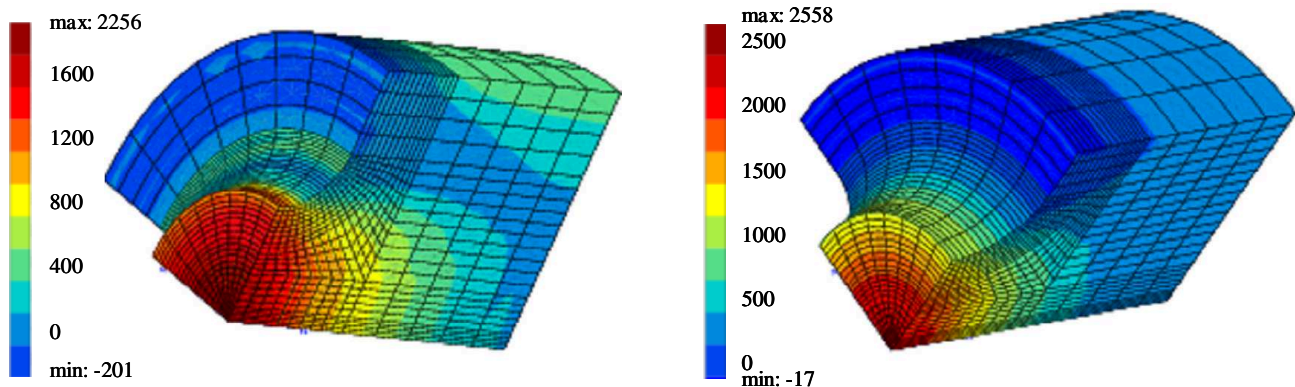


Fig. 7. Axial stress at fracture (MPa) (a) NT2 specimen (ND, $-100\text{ }^{\circ}\text{C}$). (b) NT3 specimen (RD, $-100\text{ }^{\circ}\text{C}$).

observed for specimens taken along RD and TD. In fact, for temperatures lower than $-100\text{ }^{\circ}\text{C}$ the stress along ND within the notched specimen becomes higher than its critical value, which is much lower than that along RD and TD.

From our preliminary EBSD measurements, the rolling plane contains rather large zones susceptible to facilitate the propagation of cleavage cracks by becoming large cleavage facets, in agreement with fractographic observations. Cleavage facets after tension along RD and TD appear smaller, corresponding to small, well-separated zones found with microtexture analysis. More EBSD data are needed to confirm this.

In summary, from tensile tests of notched and smooth specimens in a range of temperature and pulling directions, the occurrence of delamination fracture in a pipeline steel plate has been quantitatively described by an anisotropic critical cleavage stress. This anisotropy seems to be linked to anisotropy in microtexture. Improvement of the resistance of the steel against delamination might be achieved by avoiding the formation of large zones well oriented for cleavage fracture during thermo-mechanical processing.

References

- [1] B.L. Bramfitt, A.R. Marder, A study of the delamination behavior of a very low-carbon steel, *Metall. Mater. Trans. A* 8 (1977) 1263–1273
- [2] Y.S. Shin, S.M. Hong, J.H. Bae, et al., Separation phenomenon occurring during the Charpy impact test of API X80 pipeline steels, *Metall. Mater. Trans. A* 40 (2009) 2333–2349
- [3] T. Inoue, F. Yin, Y. Kimura, et al., Delamination effect on impact properties of ultrafine-grained low carbon steel processed by warm caliber rolling, *Metall. Mater. Trans. A* 41 (2010) 341–355
- [4] T. Hara, Y. Shinohara, Y. Terada, et al., DWTT properties for high strength line pipe steels, *Proceedings of the Eighteenth International Offshore and Polar Engineering Conference*, 2008
- [5] T. Hara, Y. Shinohara, H. Asahi, Y. Terada, Effects of microstructure and texture on DWTT properties for high strength line pipe steels, *Proceeding of IPC, International Pipeline Conference*, 2006
- [6] T. Fujishiro, T. Hara, Effects of separation on ductile crack propagation behavior during drop weight tear test, *Proceedings of Twenty-first International Offshore and Polar Engineering Conference*, 2011
- [7] Z. Yang, W.L. Guo, C.Y. Huo, Y. Wang, Fracture appearance evaluation of high performance pipeline steel DWTT specimen with delamination cracks, *Key Eng. Mater.* 324–325 (2006) 59–62
- [8] M.S. Joo, D.-W. Suh, J.H. Bae, H.K.D.H. Bhadeshia, Role of delamination and crystallography on anisotropy of Charpy toughness in API-X80 steel, *Mater. Sci. Eng. A* 546 (2012) 314–322
- [9] W. Yan, W. Sha, L. Zhu, W. Wang, Y.-Y. Shan, K. Yang, Delamination fracture related to tempering in a high-strength low-alloy steel, *Metall. Mater. Trans. A* 41 (2010) 159–171
- [10] D.A. Mirzaev, I.L. Yakovleva, N.A. Tereshchenko, et al., Structural aspect of delamination crack formation during the HTMT of steels with a ferritic structure, *The Physics of Metals and Metallography* 106 (2008) 186–194
- [11] Z. Yang, C. Huo, W. Guo, The Charpy notch impact test of X70 pipeline steel with delamination cracks, *Key Eng. Mater.* 297–300 (2005) 2391–2396
- [12] S. Kalyanam, A.J. Beaudoin, R.H. Dodds Jr., F. Barlat, Delamination cracking in advanced aluminium-lithium alloys-Experimental and computational studies, *Eng. Fract. Mech.* 76 (2009) 2174–2191
- [13] G. Baldi, G. Buzzichelli, Critical stress for delamination fracture in HSLA steels, *Metal Science* 12 (1978) 459–472
- [14] F. Tankoua, ArcelorMittal internal Ph.D. progress report, 2013
- [15] A. Andrieu, Mechanisms and multi-scale modeling of brittle fracture modifications induced by the thermal ageing of a pressurised water reactor steel, Ph.D. dissertation, École des Mines de Paris, France, 2013
- [16] F. Bron, J. Besson, A yield function for anisotropic materials, application to aluminium alloys, *Int. J. Plast.* 20 (2004) 937–963