



## Early achievements towards an automatic assessment of the uncertainty in solar irradiation using web services

Lucien Wald, Philippe Blanc, Bella Espinar, Benoît Gschwind, Mireille Lefèvre, Lionel Ménard, Fabien Wald, Carsten Hoyer-Klick, Marion Schroedter Homscheidt, Claire Thomas

### ► To cite this version:

Lucien Wald, Philippe Blanc, Bella Espinar, Benoît Gschwind, Mireille Lefèvre, et al.. Early achievements towards an automatic assessment of the uncertainty in solar irradiation using web services. 25th EnviroInfo Conference 'Environmental Informatics', Oct 2011, Ispra (VA), Italy. pp.309-318. hal-00630604

**HAL Id: hal-00630604**

**<https://minesparis-psl.hal.science/hal-00630604>**

Submitted on 10 Oct 2011

**HAL** is a multi-disciplinary open access archive for the deposit and dissemination of scientific research documents, whether they are published or not. The documents may come from teaching and research institutions in France or abroad, or from public or private research centers.

L'archive ouverte pluridisciplinaire **HAL**, est destinée au dépôt et à la diffusion de documents scientifiques de niveau recherche, publiés ou non, émanant des établissements d'enseignement et de recherche français ou étrangers, des laboratoires publics ou privés.

Wald L., Blanc Ph., Espinar B., Gschwind B., Lefevre M., Menard L., Wald F., Hoyer-Klick C., Schroedter-Homscheidt M., Thomas C., Early achievements towards an automatic assessment of the uncertainty in solar irradiation using web services. In Proceedings of the 25th EnviroInfo Conference 'Environmental Informatics', 5-7 October 2011, Ispra (VA), Italy. Pillman W., Schade S., Smits P. (Eds). Part 1, pp. 309-318. Publisher Shaker Verlag, Aachen, Germany, 2011.

## **Early achievements towards an automatic assessment of the uncertainty in solar irradiation using web services**

Lucien Wald<sup>1</sup>, Philippe Blanc<sup>1</sup>, Bella Espinar<sup>1</sup>, Benoît Gschwind<sup>1</sup>, Mireille Lefèvre<sup>1</sup>, Lionel Ménard<sup>1</sup>, Fabien Wald<sup>1</sup>, Carsten Hoyer-Klick<sup>2</sup>, Marion Schroedter-Homscheidt<sup>3</sup>, Claire Thomas<sup>4</sup>

### **Abstract**

A long standing effort aims at creating and operating an automatic procedure for the assessment of the uncertainty in solar radiation data and the delivery of this information to users. This communication presents the early achievements. The overall objective can be seen as composed of three specific objectives: 1) assessing the uncertainty of the satellite-derived irradiation compared to a reference; 2) as the uncertainty depends on atmospheric conditions, devising a model that can predict uncertainty at any location and any time; 3) delivering information to users. As irradiation data are already delivered through the SoDa Service and the IEA SHC#36 / MESOR portal, it is natural to use these dissemination media and to embed the uncertainty quantities in the data flow. The strategy is to implement the overall procedure by the means of interoperable Web services. Two ensembles of Web services are being developed: one for the assessment protocol, the other for the model of uncertainty.

### **1. Introduction**

The solar radiation reaching the ground level on horizontal surfaces is of paramount importance in many applications, from climate to health (ESRA, 2000). The amount of power available on a surface of 1 m<sup>2</sup> integrated over the whole spectrum of the solar radiation is called surface solar irradiance (SSI). SSI is expressed in W/m<sup>2</sup>. The SSI is an Essential Climate Variable as designed by the Global Climate Observing System in August 2010 (GCOS, 2010), meaning that it is a parameter of key importance for understanding and monitoring the global climate system. Meteorological networks measure the density of energy received on a horizontal plane at ground level during a certain period, e.g. 15 min, an hour or a day. This is the 15-min, hourly or daily irradiation, also called 15-min, hourly or daily solar exposure, and expressed in MJ/m<sup>2</sup> or J/cm<sup>2</sup>. The hourly mean of SSI is derived from the hourly irradiation by dividing by the number of seconds in 1 h, i.e. 3600 s. By convention, the daily mean of SSI is computed from the daily irradiation by dividing it by the number of seconds in 24 h, i.e., 86400 s.

Accurate assessments of irradiation can now be drawn from satellite data (Blanc et al., 2011a). Stations at ground level measuring irradiation on the long-term (*i.e.* more than 10 years) are rare and satellites are an accurate way to complement or supplement them. There are several advantages in satellite-derived assessments of irradiation. They cover large areas, such as for example Europe, Africa and

---

<sup>1</sup> Center for Energy and Processes, MINES ParisTech, BP 207, 06904 Sophia Antipolis cedex, France

<sup>2</sup> German Aerospace Center DLR, Institute of Technical Thermodynamics, Pfaffenwaldring 38-40, 70569 Stuttgart, Germany

<sup>3</sup> German Aerospace Center DLR, Münchner Strasse 20, 82234 Wessling, Germany

<sup>4</sup> Transvalor, Parc de Haute Technologie Sophia Antipolis, 694, av. du Dr. Maurice Donat, 06255 Mougins Cedex, France

the Atlantic Ocean at one glance. Fig. 1 shows an example of the synoptic view offered by the Meteosat series of geostationary satellites. Such images clearly depict clouds and more generally the optical state of the atmosphere. These satellites take images every 15 min. It means that we have an assessment of the 15-min irradiation received by a pixel every 15 min, where a pixel corresponds to a ground surface of  $3 \times 3 \text{ km}^2$  in the subsatellite (or nadir) point. This makes a wealth of information that cannot be supplied by ground-based meteorological networks.

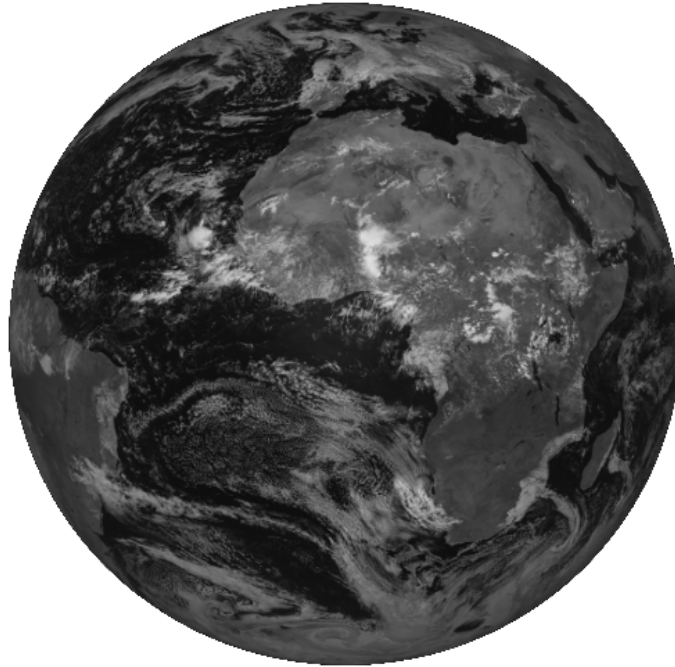


Figure 1

Example of an image taken by the satellite Meteosat on 11 November 2003, at 1100 UTC. Reflectance increases from black to white. Clouds are clearly visible. Copyright Eumetsat, 2003

Several initiatives were launched in order to create databases of irradiation by processing satellite images (Cros/Wald, 2004; Wald, 2006). Among them, is the SOLEMI project initiated by the German Aerospace Center DLR (Meyer et al., 2004). Another initiative is the HelioClim project launched by MINES ParisTech in 1997, to increase knowledge on irradiation and to offer irradiation values for any site and any instant over Europe, Africa and the Atlantic Ocean and long period of time, to a wide audience (Rigollier/Wald, 1999; Blanc et al., 2011a). The HelioClim-1 database offers daily irradiation for the period 1985–2005. It has been created from archives of images of the Meteosat First Generation satellites. The HelioClim-3 database represents a step forward regarding spatial and time resolution, improving assessment of uncertainty on SSI, and reducing time needed to access recent data. It exploits the enhanced capabilities of the series of satellites Meteosat Second Generation to deliver values of irradiation every 15 min with a spatial resolution of 3 km at nadir. To achieve this, MINES ParisTech has set up a routine operation for converting Meteosat data into 15-min irradiation on a near-real time basis. The SoDa Service ([www.soda-is.com](http://www.soda-is.com)) was selected as the means to disseminate the HelioClim databases in order to benefit from the notoriety of this service. SoDa was initially a European project for the integration and exploitation of networked solar radiation databases (Wald et al., 2002). It was then established as an operational service in 2003 (Gschwind et al., 2005, 2006) and is now widely used by communities interested in solar radiation: more than 50 000 users in 2010. Data can be retrieved by users using a standard Internet browser. The high number of requests made to the HelioClim databases, approx. 2 millions in 2010, indicates clearly the high level of interest in irradiation data; the major demand comes from the energy sector.

## 2. A challenge: providing assessment of uncertainty

Concern about uncertainty is growing in environment. This concern includes radiation data as solar radiation plays a major role in environment. For example, errors in solar radiation may impact assessment of terrestrial or oceanic biomass. In another example, if erroneous data are used, wrong performances will be obtained in assessing the yield of a solar-powered system, leading to wrong decision in investment or energy policies as demonstrated in the ENVISOLAR project (Schroedter-Homscheidt et al., 2006). Energy producers are aware of this in the last years and have pushed data providers to make efforts to assess and document uncertainty in satellite-derived irradiation.

Supplying irradiation data together with associated uncertainty is a new challenge for data providers. Methods converting satellite data are fairly new, say 30 years, and till 2008, no common benchmark was available permitting to compare outcomes of these methods. A number of comparisons were made between results of methods and measurements by ground stations (Abdel Wahab et al., 2009; Blanc et al., 2011b; Cano et al., 1986; Diabaté/Wald, 1995; Ineichen et al., 2009; Lefèvre et al., 2007; Moradi et al., 2009; Njomo/Wald, 2006; Perez et al., 1997, 2002; Raschke et al., 1987; Rigollier et al., 2004; Rossow/Zhang, 1995; Wang et al., 2011). It is not easy to compare the results of these comparisons one to each other. A first challenge lies in the quantities used to quantify the uncertainty. There are a number of differences in spatial and temporal resolutions which induce differences in results (Blanc et al., 2011a; England/Hunt, 1984; Pinker/Lazslo, 1991; Zelenka et al., 1999). The lack of ground-based measuring stations offering long time series of reliable data is another difficulty. It is fairly easy to perform comparisons in, e.g. France or Germany, where a large number of good quality measuring stations are operated; it is much more difficult to find good measurements in many other countries, and even impossible over oceans. The credibility of the uncertainty assessment increases as the number of stations used for its computation increases. Thus, the value of uncertainty assessment made with a limited number of stations is questionable, especially in areas far from these stations. Finally, on pure technical consideration, how uncertainty should be presented and delivered to users should be dealt with.

The authors are tackling these issues in a long standing effort. They are working together aiming at creating and operating an automatic procedure for the assessment of the uncertainty and the delivery of this information to users. The efforts have begun in 2004 during the Envisolar project co-funded by the European Space Agency (Schroedter-Homscheidt et al., 2006). They benefit from other international projects such as the MESOR, MACC and ENDORSE projects co-funded by the European Commission, the Task SHC#36 of the International Energy Agency (IEA) (Stackhouse et al., 2006), and the GEOSS (Global Earth Observation System of Systems).

The overall objective can be seen as composed of three specific objectives: 1) assessing the uncertainty of the satellite-derived irradiation compared to a reference; 2) as the uncertainty depends on atmospheric conditions, devising a model that can predict uncertainty at any location and any time; 3) delivering information to users.

## 3. Defining a reference and a protocol for uncertainty assessment

The first specific objective is to assess the uncertainty of the satellite-derived irradiation compared to a reference. Discussions were held in the working groups of the IEA SHC#36 and MESOR projects. It was established that the reference should be made of an *ad-hoc* series of ground-based measurements of recognised and checked quality. The typical accuracy of irradiation measured in the global meteorological network is 3% to 5% in terms of root mean square error, provided that irradiation data has passed some quality check procedures. Therefore, under these conditions, the ground measurements can be seen as an accurate reference against which one may compare the irradiation derived from satellite.

The comparison is made by computing the difference between the two sets of measurements and analysing statistical quantities, such as mean bias error, standard-deviation of error, root-mean square error (RMSE), and correlation coefficient. The choice of these quantities results from consultation of practitioners in ENVISOLAR and MESOR projects (Hoyer-Klick et al., 2008) and is dictated by the

knowledge of these practitioners about uncertainty and statistical quantities. These quantities are actually those recommended by the ISO (1995). Other quantities were elaborated relating to agreement between the statistical distributions such as Kolmogorov-Smirnov test integral (KSI) proposed by Espinar et al. (2009); there are not adopted presently because of the lack of understanding by practitioners.

The protocol for uncertainty assessment is as follows. Firstly, select good quality data from ground-based stations with *ad-hoc* quality control procedures. Then, perform the comparison between these data and coincident satellite-derived irradiation. Compute and provide the mean irradiation in ground-based observations, number of observations, correlation coefficient, mean bias error, standard-deviation of error, RMSE, and the relative value, expressed in per cent, of the last three quantities to the mean irradiation. Drawing graphs, such as correlograms or scatterplots (fig. 2), is recommended.

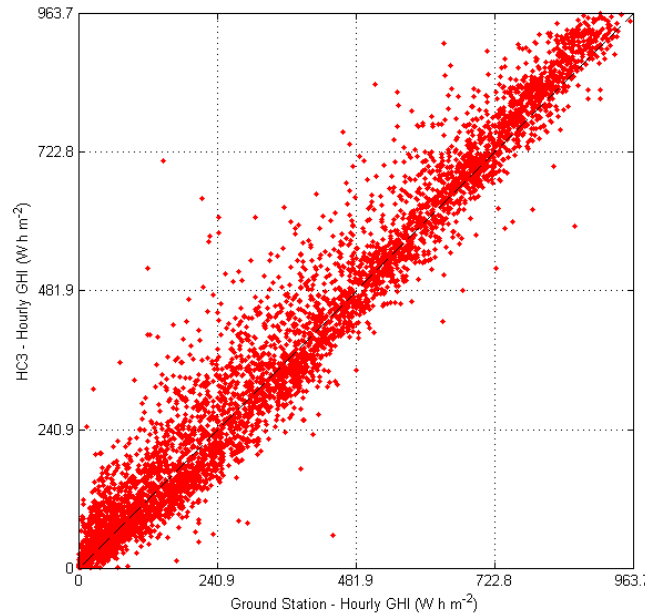


Figure 2

Example of a correlogram (or scatterplot) between hourly irradiation measured by the meteorological station of Nice (France) and that derived from satellite images (HC-3).

Optionally, these operations should be performed for irradiation as well as for the clearness index, which is the ratio of the irradiation observed at ground level to the irradiation observed at the top of the atmosphere. Another option is to apply the protocol for selected cases, such as classes of solar zenithal angles or cloud coverage (e.g. clear-sky or overcast conditions). A third option is to perform the above-described operations for the different time scales (e.g. hourly, daily, monthly or yearly time scales) available within the data sets depending on the finer time scale, data missing and the duration of coincident periods.

The result of this benchmarking protocol describes the uncertainty observed for the few selected measuring stations during a limited period of time. This protocol permits to qualify in a similar manner, similar products from different suppliers and is a useful tool to select the most appropriate product for a specific application.

Several limitations exist that make the assessment of the quality of retrieved irradiances a difficult task. Blanc et al. (2011b) discuss the quality of the ground measurements that can be obtained from the World Radiation Data Center (WRDC) and their spatial and temporal scarcity. A severe limitation is due to the large differences in principles of measurements. Single point and temporally integrated data (ground measurements) are compared to spatially integrated and instantaneous data (satellite estimates). An assumption of ergodicity (e.g. here equivalence between the temporal and spatial averages)

is usually made. This assumption is correct only if the field is spatially homogeneous at the considered time scale over an area much larger than a pixel. This is generally false when a significant physiographic feature is present. Other local effects such as reflections on the surrounding slopes or the shadows of clouds may add to the difficulty in comparison. Accordingly, an intrinsic discrepancy is expected because of the natural variability of irradiation in space.

Zelenka et al. (1999) have observed the local variability of the solar radiation using measurements made by well-calibrated ground stations close to each other. They demonstrate that this variability cannot be ignored. Expressing it as the ratio of the variance relative to the mean value over the area, they found typical variability of 17 % in hourly irradiation for an area of 10 km in radius. This means that within a 10 x 10 km<sup>2</sup> area, irradiation measured by a series of similar inter-calibrated sensors would exhibit the same mean value but would differ from hour-to-hour, with a relative variance equal to 17 %. Therefore, observing a difference hour-to-hour of 17 % between a single pyranometer located in a pixel cannot mean that the satellite-derived irradiation is of bad quality. These authors established that a substantial part of the difference between satellite-derived data and ground-based measurements comes from three different sources. One is the natural variability of the irradiation as discussed above. The second one is the error in measurements, which may amount from 3 % to 5 %. Finally, the hypotheses of ergodicity and spatial homogeneity of the irradiation may induce an additional error of 3 % of the mean irradiation.

#### 4. Predicting uncertainty at any location and any time

The application of the protocol to several cases and databases in the MESOR and IEA SHC#36 projects, among others, reveals that the uncertainty depends on atmospheric conditions and other environmental variables. Uncertainty cannot be described by a set of quantities that are constant in time and space, and that could be derived from one or more benchmarks. Consequently, a model should be devised that can predict uncertainty at any location and any time. This is the second specific objective.

Previous benchmarks reveal that the most important variables explaining the uncertainty are sun zenithal angle, clearness index, and irradiation itself. All these variables can be known in a deterministic way or already estimated and therefore can be used as inputs to a model predicting uncertainty. In case of daily irradiation, there are only two variables: clearness index, and irradiation itself.

To our knowledge, there is no such published model. MINES ParisTech made a first attempt in 2006 for the HelioClim-1 database for daily irradiation. Based on results of multiple applications of the benchmarking protocol, we established an empirical analytical model.

Let  $K_c$  be the clear-sky index. It is the ratio of the irradiation  $I$  at ground level to the irradiation  $I_c$  that should be observed under a clear sky for this day and location. The model ESRA (Rigollier et al. 2000) is one of the models that can be used to predict  $I_c$ . Then, we define a systematic error (0.05) and a random part in  $K_c$ :

$$\alpha = 0.05 + 0.04 / \sqrt{ndays}$$

where  $ndays$  is the number of days used to compute the daily irradiation. In case of monthly means of daily irradiation, e.g.,  $ndays$  will be equal to 30.

We define  $r$  as the number of hourly values used to compute the daily irradiation divided by the number of possible hours in the duration of this particular day. The error in  $K_c$  is:

$$\begin{aligned} errorKc &= \alpha \exp[\ln(2)(1 - Kc)] \text{ if } r > 0.5 \\ errorKc &= \alpha \exp[\ln(2)(1 - Kc)] \exp[1.54(0.5 - r)] \text{ otherwise} \end{aligned}$$

The error in daily irradiation is then:

$$error = I_c \text{ errorKc}$$

The outcome *error* of this model was considered as equivalent to the RMSE. It was delivered together with the daily irradiation to the users on the SoDa Service. It helps creating awareness on uncertainty among users and helps researchers to gain expertise in this domain.

Though the approach is the same, we have elaborated a more precise model for the HelioClim-3 database taking into account comments from users. In particular, we have decided to deliver lower and

upper bounds in irradiation, such that there is a 68% chance that the actual value is comprised between them.

We have selected 29 stations offering time series of hourly irradiation of good quality during the period 2004-2005. These stations are mostly located in Europe with one in South Africa, one in South Algeria and one in Israel. By using the protocol, we have estimated the differences for all stations merged together. Prior to this, the HelioClim-3 estimates were corrected in elevation using the model of Abdel Wahab et al. (2009) to adjust to the elevation above sea level of the ground stations.

In case of daily irradiation, we have created classes in clearness index, and HelioClim-3 daily mean of irradiance. For each class, we have computed bias (mean value of the difference), standard-deviation, and RMSE. All these quantities were expressed relatively to the HelioClim-3 mean irradiance for this class.

Thus, we obtained abaci whose inputs are clearness index, and HelioClim-3 daily mean of irradiance. There are 6 bins in daily mean of irradiance, in  $W/m^2$ : [0, 100, 200, 300, 400, 500, 600], and 8 bins in clearness index: [0, 0.1, 0.2, 0.3, 0.4, 0.5, 0.6, 0.7, 1.1]. Each class contain relative bias: *bias*, standard-deviation: *std*, and RMSE: *rmse*. The computation of the lower and upper bounds *Elow* and *Eup* for the daily mean of irradiance *E* is as follows:

$$\begin{aligned} Elow / E &= 1 + bias - std / \sqrt{ndays} \\ Eup / E &= 1 + bias + std / \sqrt{ndays} \\ \text{if } (Elow / E) > 0.9, \text{ or } (Eup / E) < 1.1, \text{ then} \\ Elow / E &= 1 + bias - RMSE / \sqrt{ndays} \\ Eup / E &= 1 + bias + RMSE / \sqrt{ndays} \end{aligned}$$

The case of irradiation for period less than a day, e.g., hour, 30 min, or 15 min is fairly similar, except that we compute abaci whose inputs are sun zenithal angle, clearness index, and HelioClim-3 hourly (or 30-min, or 15-min) mean of irradiance. There are 5 bins in solar zenithal angle, in degree: [0, 30, 40, 50, 60, 90], 6 bins in hourly mean of irradiance, in  $W/m^2$ : [0, 200, 400, 600, 800, 1000, 1400], and 8 bins in clearness index: [0, 0.1, 0.2, 0.3, 0.4, 0.5, 0.6, 0.7, 1.1]. Each class contain relative bias, standard-deviation and RMSE.

Let *nmin* denotes the number of minutes in the period of integration. *nmin* is equal to 60 for hourly irradiation, and 15 for 15-min irradiation. The computation of the lower and upper bounds *Elow* and *Eup* for the hourly (or 30-min, or 15-min) mean of irradiance *E* is as follows:

$$\begin{aligned} Elow / E &= \max(0, 1 + bias - std * \sqrt{(60/nmin)}) \\ Eup / E &= 1 + bias + std * \sqrt{(60/nmin)} \\ \text{if } [(Elow + Eup)/2 - E] > 0.8 (Eup - Elow), \text{ then} \\ Elow / E &= 1 + bias - RMSE * \sqrt{(60/nmin)} \\ Eup / E &= 1 + bias + RMSE * \sqrt{(60/nmin)} \end{aligned}$$

These two quantities are delivered routinely together with the irradiation to the users on the SoDa Service. It brings benefit to companies monitoring the electricity produced by solar-powered systems, since after transformation by a model simulating the system of energy conversion it provides a corresponding plausible range of energy to be produced. Any outlier may mean a problem in the system. The model has been validated by further benchmarks, using other stations in other areas. It reveals to be quite robust though it has been noted that it overestimates the uncertainty in several cases.

## 5. Delivering information to users

The third objective is to deliver information to users. The easiest way to do so is to present the uncertainty values on the same Web page containing the irradiation. This is what was made at the earliest stages of our project in the SoDa Service in 2006. Much more can be done today, considering the needs of users to have their computers interacting with the computers providing access to data and the current capabilities in interoperability. We do not discuss here the quantities to be provided that relate to uncertainty or their format. As written before, choice of quantities was made as a function of the knowledge and expectations of practitioners.

We see the delivery of information on uncertainty as a series of challenges, dealing on the one hand with the description of uncertainty and its coding, and on the other hand, with Web services capable of computing uncertainty, thus implementing the workflow by their composition (Gschwind et al., 2007b).

As irradiation data are already delivered through the SoDa Service and the IEA SHC#36 / MESOR portal, it is natural to use these dissemination means. The uncertainty quantities are embedded in the flow containing irradiation.

Several services providing irradiation and uncertainty were implemented in the SoDa Service using the proprietary SoDa XML presented at EnviroInfo in 2002 (Wald et al., 2002). In this case, there is no specific metadata devoted to the description of uncertainty. The SoDa XML has the advantage of being simple, thus allowing rapid development but is limited regarding interoperability and does not obey current standards promoted by GEOSS (Percivall et al., 2011; Robinson et al., 2009).

More advanced services providing the same information were implemented using WSDL; a revision of the XML schema “SolarResourceKnowledge-2.1.xsd” (Gschwind et al., 2007a) was made to include uncertainty quantities in the product delivered to users. For each instant of observation, e.g., every hour, an irradiation is provided together with the uncertainty attached to this irradiance, as well as a reliability code. The uncertainty can be expressed as a single value, e.g., standard-deviation, or as lower and upper bounds as seen above. These bounds are such that there is a 68% chance that the actual value is comprised between lower and upper bounds. The meaning of the reliability code depends on the type of products. This code denotes whether the irradiation results from an interpolation in time of two adjacent values (for example, the case of a gap during a day), or provides the number of valid 15-min values used to compute a daily average, or the number of valid daily values used to compute a monthly average. This is fully described in the exploitation metadata conveyed by the product. This schema is presently used to disseminate HelioClim and SOLEMI data through the MESOR portal.

Though operational, all these services must be considered as prototypes. They do not permit to achieve the third specific objective “delivering information to users” and further work is needed.

One of our goals is to create Web services permitting practitioners to upload their legacy data, or use archived data measured by ground-based stations in order to perform the protocol. In this way, we expect to increase the number of tests of performances made on the HelioClim and SOLEMI databases by users, therefore increasing the knowledge on the merits of these databases and the sharing of this knowledge. Another series of Web services should be developed implementing the model predicting the accuracy. Actually, this implementation will be part of the development of the Web services providing the irradiation from HelioClim or SOLEMI databases.

## 6. Conclusions and perspectives

We have presented here early achievements reached in this long-standing effort for the assessment of uncertainty of solar irradiation data estimated by the processing of satellite images and other Earth Observation data.

International efforts have resulted in a protocol for benchmarking such irradiation data. This was the first objective to attain. The reference is composed of good quality measurements made at ground level by qualified measuring stations. Quantities describing uncertainty are quite standard: bias, standard-deviation, RMSE. Similar irradiation data from different suppliers can be qualified in a similar manner by this protocol. It is a useful tool for users to select the most appropriate database for a specific application.

It is impossible to describe the uncertainty in solar irradiation with constant values in time nor in space, whether absolute or relative. The uncertainty is a function of atmospheric conditions and the irradiation itself, thus is changing rapidly. This communication has presented two models elaborated for the HelioClim databases that predict the uncertainty for any site and any instant. These models have proved to be robust. We may consider that we have reached the second specific objective. However, efforts should be made to better estimate the uncertainty. We believe that this objective can only be reached by improving the method estimating the irradiation from satellite images.



Delivering information on uncertainty to users is our current challenge. Interoperability is a key element in our strategy. Web services will be chained in order to obtain value-added Web services implementing the benchmarking and the uncertainty model. Interoperability is also a means to exploit new or more accurate services, replacing older ones. The Web services will be deployed in the Energy Community Portal ([www.webservice-energy.org](http://www.webservice-energy.org)). The GEOSS-compliant CSW (catalogue service for the web) provided by the EC-funded project EnerGEO ([energeo.researchstudio.at](http://energeo.researchstudio.at)) will enable these services to be searched and discovered.

These activities are taking place under the GEOSS umbrella, thus contributing to the Architecture and Data Committee and to Community of Practice “energy”. A scenario will be developed in Phase-4 of the GEOSS Architecture Implementation Pilot (AIP-4) exploiting several services where data flow conveys uncertainty information. This research partly contributes to EC-co-funded projects MACC (2009-2011) and ENDORSE (2011-2013) and to IEA activities in SHC#46 (2011-2016). Cooperation with other projects such as the QA4EO project or EC-co-funded project UncertWeb (2010-2012) is a perspective.

## Acknowledgements

The research leading to these results has partly received funding from the European Union’s Seventh Framework Programme (FP7/2007-2013) under Grant Agreements no 218793 (MACC project) and no. 262892 (ENDORSE project).

## Bibliography

- Abdel Wahab, M., El Metwally, M., Hassan, R., Lefèvre, M., Oumbe, A., Wald, L. (2009): Assessing surface solar irradiance in Northern Africa desert climate and its long-term variations from Meteosat images. *International Journal of Remote Sensing*, 31(01), 261 – 280.
- Blanc, Ph., Gschwind, B., Lefèvre, M., Wald, L. (2011a): The HelioClim project: Surface solar irradiance data for climate applications. *Remote Sensing*, 3, 343-361.
- Blanc, Ph., Gschwind, B., Lefèvre, M., Wald, L. (2011b): Validating Meteosat-derived surface solar irradiance in Mozambique. In *Proceedings of the 30th Symposium of the European Association of Remote Sensing Laboratories*, Ed. Halounova L., held in Prague, Czech Republic, 30 May – 2 June 2011, A. A. Balkema Publisher.
- Cano, D., Monget, J.M., Albuissou, M., Guillard, H., Regas, N., Wald, L. (1986): A method for the determination of the global solar radiation from meteorological satellites data. *Solar Energy*, 37, 31-39.
- Cros, S., Wald, L. (2004): Survey of the main databases providing solar radiation data at ground level. In *Proceedings of the 23rd EARSeL Annual Symposium "Remote Sensing in Transition"*, 2-4 June 2003, Ghent, Belgium, Rudi Goossens editor, Milpress, Rotterdam, Netherlands, pp. 491-497.
- Diabaté, L., Wald, L. (1995): An attempt to estimate the diffuse component of solar radiation on horizontal plane from satellite images. *African Journal of Science and Technology*, 11, 1, 39-44.
- England, C.F., Hunt, G.E. (1984): A study of the errors due to temporal sampling of the earth’s radiation budget. *Tellus*, 36B, 303-316.
- Espinar, B., Ramirez, L., Drews, A., Beyer, H.G., Zarzalejo, L.F., Polo, J., Martin, L. (2009): Analysis of different comparison parameters applied to solar radiation data from satellite and German radiometric stations. *Solar Energy*, 83(1), 118-125.
- ESRA (2000): *European Solar Radiation Atlas*. Fourth edition, includ. CD-ROM. Edited by K. Scharmer, J. Greif. Scientific advisors: R. Dogniaux, J. K. Page. Published for the Commission of the European Communities by Ecole des Mines de Paris, Paris.
- GCOS (2010): *Global Climate Observing System (GCOS) Essential Climate Variables*. Available online: [www.wmo.int/pages/prog/gcos/index.php?name=EssentialClimateVariables](http://www.wmo.int/pages/prog/gcos/index.php?name=EssentialClimateVariables) (accessed on 19 July 2011).

- Gschwind, B., Ménard, L., Albuissou, M., Wald, L. (2005): Three years of experience with the SoDa web service delivering solar radiation information: lessons learned and perspectives. In Proceedings of the 19th International Conference on Informatics for Environmental Protection, J. Hrebíček, J. Racek Eds, Part 1, pp. 95-102. Published by the Masaryk University in Brno, Czech Republic.
- Gschwind, B., Ménard, L., Albuissou, M., Wald, L. (2006): Converting a successful research project into a sustainable service: the case of the SoDa Web service. *Env. Modelling Software*, 21, 1555-1561.
- Gschwind, B., Ménard, L., Ranchin, T., Wald, L., Stackhouse, P. (2007a): A proposal for a thesaurus for web services in solar radiation. In Proceedings EnviroInfo 2007, O. Hryniewicz, J. Studzinski and M. Romaniuk (Eds), Shaker Verlag, vol. 1, pp. 135-142.
- Gschwind, B., Wald, L., Mahl, R., Irigoien, F., Ménard, L. (2007b): Test of several approaches for the composition of web services in meteorology. In Proceedings EnviroInfo 2007, O. Hryniewicz, J. Studzinski and M. Romaniuk (Eds), Shaker Verlag, vol. 1, pp. 127-134.
- Hoyer-Klick, C., Schillings, C., Schroedter Homscheidt, M., Beyer, H.-G., Dumortier, D., Wald, L., Menard, L., Gschwind, B., Martinoli, M., Gaboardi, E., Ramirez, L., Polo, J., Huld, T., Suri, M., Cebecauer, T., De Blas, M., Lorenz, E., Pfatischer, R., Remund, J., Ineichen, P., Tsvetkov, A., Hofierka, J. (2008): Management and exploitation of solar resource knowledge. Proceedings, EUROSUN 2008, 1st International Congress on Heating, Cooling and Buildings, Lisbon, Portugal.
- Ineichen, P., Barroso, C.S., Geiger, B., Hollmann, R., Marsouin, A., Mueller, R. (2009): Satellite Application Facilities irradiance products: hourly time step comparison and validation over Europe. *Int. J. Remote Sensing*, 30(21), 5549-5571.
- ISO (1995): Guide to the Expression of Uncertainty in Measurement, 1st ed.; International Organization for Standardization: Geneva, Switzerland.
- Lefèvre, M., Diabaté, L., Wald, L. (2007): Using reduced data sets ISCCP-B2 from the Meteosat satellites to assess surface solar irradiance. *Solar Energy*, 81, 240-253.
- Meyer, R., Hoyer, C., Diedrich, E., Schillings, C., Schroedter, M., Büll, R., Trieb, F. (2004): Solar energy mining: High-resolution Meteosat-based service for solar radiation products for Europe, Africa and Asia. In: EuroSun, 14. Intern. Sonnenforum, 3, pp. 857-863. EuroSun, 14. Intern. Sonnenforum, Freiburg im Breisgau, 20-23 June 2004.
- Moradi, I.; Mueller, R.; Alijani, B.; Gholam, A. (2009): Evaluation of the Heliosat-II method using daily irradiation data for four stations in Iran. *Solar Energy*, 83, 150-156.
- Njomo, D., Wald, L. (2006): Solar irradiation retrieval in Cameroon from Meteosat satellite imagery using the Heliosat\_2 method. *ISESCO Science and Technology Vision*, 2(1), 19-24.
- Percivall, G., Menard, L., Chung, L. K., Nativi, S., Pearlman, J. (2011): Geo-processing in cyberinfrastructure: making the web an easy to use geospatial computational platform, In Proceedings 34th Int. Symp. Remote Sensing of Environment, Sydney, Australia, 10-15 April 2011.
- Perez, R., Ineichen, P., Moore, K., Kmiecik, M., Chain, C., George, R., Vignola, F. (2002): A new operational model for satellite-derived irradiances: Description and validation. *Solar Energy*, 73, 307-317.
- Perez, R.; Seals, R.; Zelenka, A. (1997): Comparing satellite remote sensing and ground network measurements for the production of site/time specific irradiance data. *Solar Energy*, 60, 89-96.
- Pinker, R.T., Laszlo, I. (1991): Effects of spatial sampling of satellite data on derived surface solar irradiance. *J. Atmos. Oceanic Technol.*, 8, 96-107.
- Raschke, E.; Gratzki, A.; Rieland, M. (1987): Estimates of global radiation at the ground from the reduced data sets of the International Satellite Cloud Climatology Project. *J. Climate*, 7, 205-213.
- Rigollier, C., Bauer, O., Wald, L. (2000): On the clear sky model of the 4th European Solar Radiation Atlas with respect to the Heliosat method. *Solar Energy*, 68(1), 33-48.
- Rigollier, C., Lefèvre, M., Wald, L. (2004): The method Heliosat-2 for deriving shortwave solar radiation from satellite images. *Solar Energy*, 77(2), 159-169.
- Rigollier, C., Wald, L. (1999): The HelioClim Project: From satellite Images to solar radiation maps. In Proc. of the ISES Solar World Congress 1999, Jerusalem, Israel, July 4-9, 1999; Vol. I, 427-431.

- Robinson, E. M., Husar, R. B., Falke, S. R., McCabe, D. C., Menard, L., Wald, L., Warnock, A. (2009): GEOSS architecture implementation pilot-II: Integrating technologies and expertise to build GEOSS. American Geophysical Union, Fall Meeting 2009, abstract #U51B-0018.
- Rossow, W.B., Zhang, Y.C. (1995): Calculation of surface and top of atmosphere radiative fluxes from physical quantities based on ISCCP data sets.2. Validation and first results. *J. Geophysical Research-Atmospheres*, 100(D1), 1167-1197.
- Schroedter-Homscheidt, M., Delamare, C., Heilscher, G., Heinemann, D., Hoyer, C., Meyer, R., Toggweiler, P., Wald, L., Zelenka, A. (2006): The ESA-ENVISOLAR project: experience on the commercial use of Earth observation based solar surface irradiance measurements for energy business purposes. In *Solar Energy Resource Management for Electricity Generation from Local Level to Global Scale*. E.D. Dunlop, L. Wald, M. Suri Eds, Nova Science Publishers, Hauppauge N.Y., USA, pp. 111-124.
- Stackhouse, P., Renne, D., Perez, R., Meyer, R., Wald, L., Suri, M. (2006): Towards designing an integrated Earth observation system for the provision of solar energy resource and assessment. In *Proceedings of the IEEE IGARSS Symposium*, pp. 3517-3520, July 2006.
- Wald, L. (2006): Available databases, products and services. In *Solar Energy Resource Management for Electricity Generation from Local Level to Global Scale*. E.D. Dunlop, L. Wald, M. Suri Eds, Nova Science Publishers, Hauppauge N.Y., USA, pp. 29-41.
- Wald, L., Albuisson, M., Best, C., Delamare, C., Dumortier, D., Gaboardi, E., Hammer, A., Heinemann, D., Kift, R., Kunz, S., Lefèvre, M., Leroy, S., Martinoli, M., Ménard, L., Page, J., Prager, T., Ratto, C., Reise, C., Remund, J., Rimoczi-Paal, A., Van der Goot, E., Vanroy, F., Webb, A. (2002): SoDa: a project for the integration and exploitation of networked solar radiation databases. In: *Environmental Communication in the Information Society*, W. Pillmann, K. Tochtermann Eds, Part 2, pp. 713-720. Published by the International Society for Environmental Protection, Vienna, Austria.
- Wang, P., Stammes, P., Mueller, R. (2011): Surface solar irradiance from SCIAMACHY measurements: algorithm and validation. *Atmospheric Measurements Techniques*, 4(5), 875-891, doi: 10.5194/amt-4-875-2011.
- Zelenka, A., Perez, R., Seals, R., Renné, D. (1999): Effective accuracy of satellite-derived hourly irradiances. *Theor. Appl. Climatol.*, 62, 199-207.